

Product datasheet for **TA311759**

NCF1 Rabbit Polyclonal Antibody

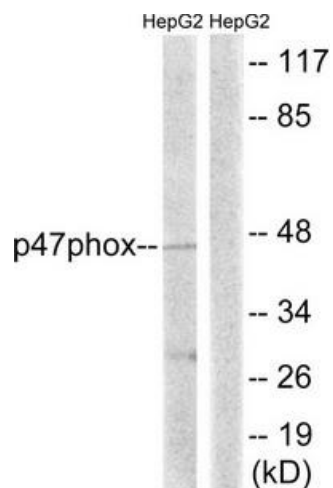
Product data:

Product Type:	Primary Antibodies
Applications:	IHC, WB
Recommended Dilution:	WB: 1:500~1:3000, IHC: 1:50~1:100, ELISA: 1:1000
Reactivity:	Human
Modifications:	Phospho-specific
Host:	Rabbit
Isotype:	IgG
Clonality:	Polyclonal
Immunogen:	The antiserum was produced against synthesized non-phosphopeptide derived from human p47 phox around the phosphorylation site of serine 345 (P-Q-SP-P-G).
Formulation:	Phosphate buffered saline (without Mg ²⁺ and Ca ²⁺), pH 7.4, 150mM NaCl, 0.02% sodium azide and 50% glycerol.
Concentration:	lot specific
Purification:	The antibody was affinity-purified from rabbit antiserum by affinity-chromatography using epitope-specific immunogen.
Conjugation:	Unconjugated
Storage:	Store at -20°C as received.
Stability:	Stable for 12 months from date of receipt.
Gene Name:	neutrophil cytosolic factor 1
Database Link:	NP_000256 Entrez Gene 653361 Human P14598
Synonyms:	NCF1A; NOXO2; p47phox; SH3PXD1A
Note:	p47 phox (Ab-345) antibody detects endogenous levels of total p47 phox protein.
Protein Pathways:	Chemokine signaling pathway, Fc gamma R-mediated phagocytosis, Leukocyte transendothelial migration, Pathogenic Escherichia coli infection, Regulation of actin cytoskeleton

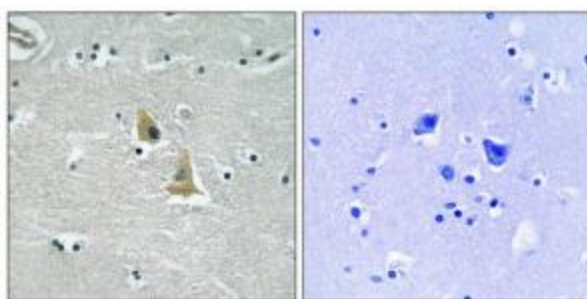


[View online »](#)

Product images:



Western blot analysis of extracts from HepG2 cells, treated with TNF (20ng/ml, 5mins), using p47 phox (Ab-345) antibody. The lane on the right is treated with the synthesized peptide.



Immunohistochemistry analysis of paraffin-embedded human brain tissue using p47 phox (Ab-345) antibody. The picture on the right is treated with the synthesized peptide.