

Product datasheet for **TA311707**

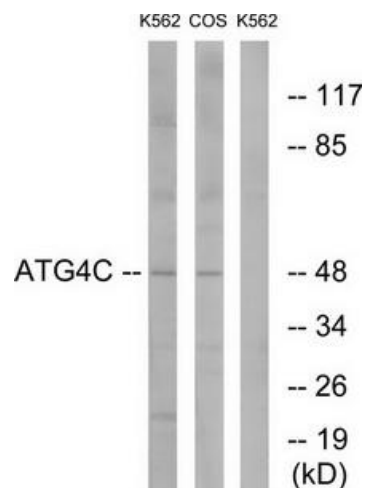
ATG4C Rabbit Polyclonal Antibody

Product data:

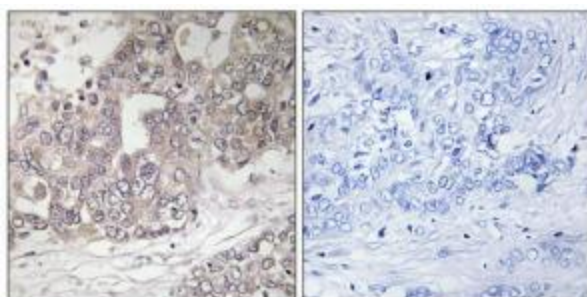
Product Type:	Primary Antibodies
Applications:	IF, IHC, WB
Recommended Dilution:	WB: 1:500~1:3000, IHC: 1:50~1:100, IF: 1:100~1:500, ELISA: 1:20000
Reactivity:	Human, Mouse
Host:	Rabbit
Isotype:	IgG
Clonality:	Polyclonal
Immunogen:	The antiserum was produced against synthesized peptide derived from internal of human ATG4C.
Formulation:	Phosphate buffered saline (without Mg ²⁺ and Ca ²⁺), pH 7.4, 150mM NaCl, 0.02% sodium azide and 50% glycerol.
Concentration:	lot specific
Purification:	The antibody was affinity-purified from rabbit antiserum by affinity-chromatography using epitope-specific immunogen.
Conjugation:	Unconjugated
Storage:	Store at -20°C as received.
Stability:	Stable for 12 months from date of receipt.
Gene Name:	autophagy related 4C cysteine peptidase
Database Link:	NP_116241 Entrez Gene 242557 Mouse Entrez Gene 84938 Human Q96DT6
Synonyms:	APG4-C; APG4C; AUTL1; AUTL3
Note:	ATG4C antibody detects endogenous levels of total ATG4C protein.
Protein Families:	Protease
Protein Pathways:	Regulation of autophagy



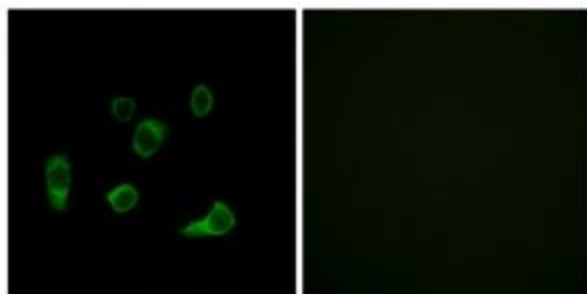
[View online »](#)

Product images:


Western blot analysis of extracts from K562 cells and COS7 cells, using ATG4C antibody. The lane on the right is treated with the synthesized peptide.



Immunohistochemistry analysis of paraffin-embedded human liver carcinoma tissue using ATG4C antibody. The picture on the right is treated with the synthesized peptide.



Immunofluorescence analysis of HuvEc cells, using ATG4C antibody. The picture on the right is treated with the synthesized peptide.