

Product datasheet for **TA311668**

E3 SUMO protein ligase PIAS4 (PIAS4) Rabbit Polyclonal Antibody

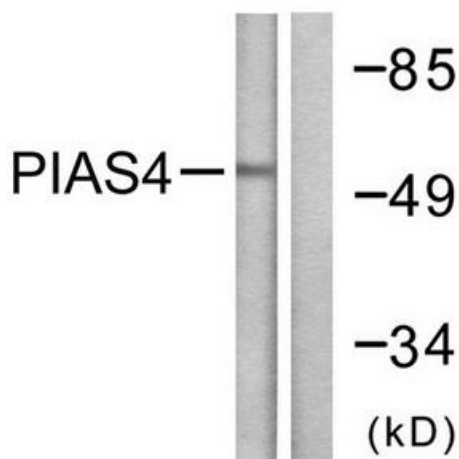
Product data:

Product Type:	Primary Antibodies
Applications:	IHC, WB
Recommended Dilution:	WB: 1:500~1:3000, IHC: 1:50~1:100, ELISA: 1:20000
Reactivity:	Human, Mouse
Host:	Rabbit
Isotype:	IgG
Clonality:	Polyclonal
Immunogen:	The antiserum was produced against synthesized peptide derived from Internal of human PIAS4.
Formulation:	Phosphate buffered saline (without Mg ²⁺ and Ca ²⁺), pH 7.4, 150mM NaCl, 0.02% sodium azide and 50% glycerol.
Concentration:	lot specific
Purification:	The antibody was affinity-purified from rabbit antiserum by affinity-chromatography using epitope-specific immunogen.
Conjugation:	Unconjugated
Storage:	Store at -20°C as received.
Stability:	Stable for 12 months from date of receipt.
Gene Name:	protein inhibitor of activated STAT 4
Database Link:	NP_056981 Entrez Gene 59004 Mouse Entrez Gene 51588 Human Q8N2W9
Synonyms:	PIAS-gamma; Piasg; PIASY; ZMIZ6
Note:	PIAS4 antibody detects endogenous levels of total PIAS4 protein.
Protein Families:	Transcription Factors
Protein Pathways:	Jak-STAT signaling pathway, Pathways in cancer, Small cell lung cancer, Ubiquitin mediated proteolysis

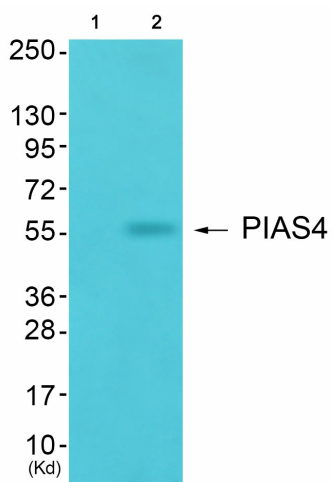


[View online »](#)

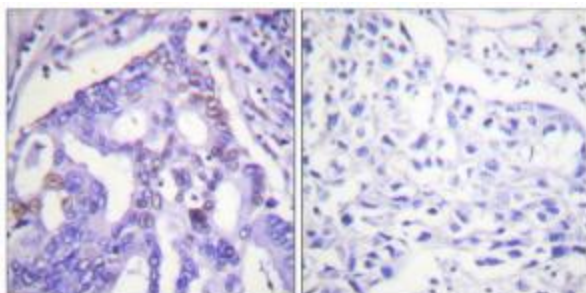
Product images:



Western blot analysis of extracts from Jurkat cells, using PIAS4 antibody. The lane on the right is treated with the synthesized peptide.



Western blot analysis of extracts from JK cells (Lane 2), using PIAS4 Antibody. The lane on the left is treated with synthesized peptide.



Immunohistochemistry analysis of paraffin-embedded human lung carcinoma tissue using PIAS4 antibody. The picture on the right is treated with the synthesized peptide.