

Product datasheet for **TA311641**

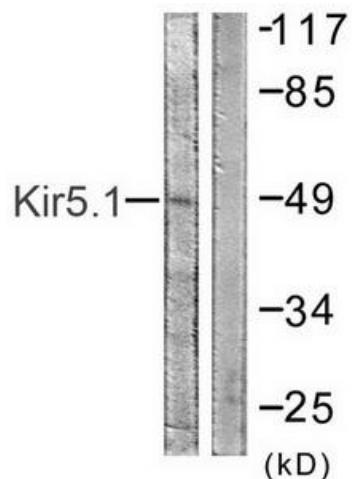
KIR5.1 (KCNJ16) Rabbit Polyclonal Antibody

Product data:

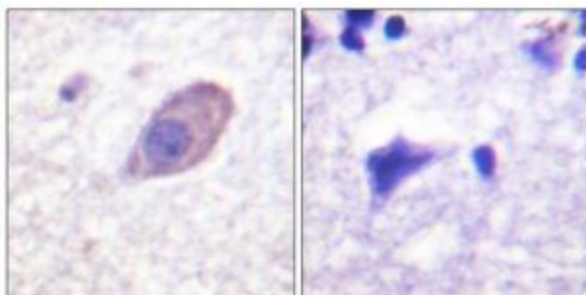
Product Type:	Primary Antibodies
Applications:	IF, IHC, WB
Recommended Dilution:	WB: 1:500~1:3000, IHC: 1:50~1:100, IF: 1:100~1:500, ELISA: 1:10000
Reactivity:	Human, Mouse, Rat
Host:	Rabbit
Isotype:	IgG
Clonality:	Polyclonal
Immunogen:	The antiserum was produced against synthesized non-phosphopeptide derived from human Kir5.1 around the phosphorylation site of serine 416 (M-E-SP-Q-M).
Formulation:	Phosphate buffered saline (without Mg ²⁺ and Ca ²⁺), pH 7.4, 150mM NaCl, 0.02% sodium azide and 50% glycerol.
Concentration:	lot specific
Purification:	The antibody was affinity-purified from rabbit antiserum by affinity-chromatography using epitope-specific immunogen.
Conjugation:	Unconjugated
Storage:	Store at -20°C as received.
Stability:	Stable for 12 months from date of receipt.
Gene Name:	potassium voltage-gated channel subfamily J member 16
Database Link:	NP_733938 Entrez Gene 16517 MouseEntrez Gene 29719 RatEntrez Gene 3773 Human Q9NPI9
Synonyms:	BIR9; KIR5.1
Note:	Kir5.1 (Ab-416) antibody detects endogenous levels of total Kir5.1 protein.
Protein Families:	Druggable Genome, Ion Channels: Potassium, Transmembrane



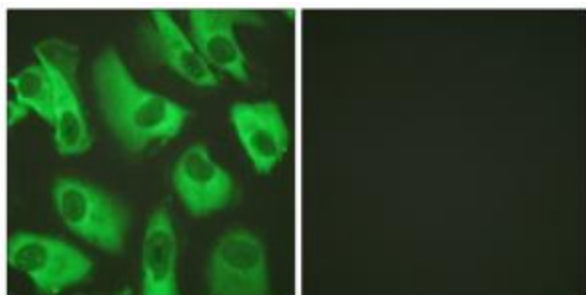
[View online »](#)

Product images:

Western blot analysis of extracts from HeLa cells, using Kir5.1 (Ab-416) antibody. The lane on the right is treated with the synthesized peptide.



Immunohistochemistry analysis of paraffin-embedded human brain tissue using Kir5.1 (Ab-416) antibody. The picture on the right is treated with the synthesized peptide.



Immunofluorescence analysis of HeLa cells, using Kir5.1 (Ab-416) antibody. The picture on the right is treated with the synthesized peptide.