

Product datasheet for **TA311459**

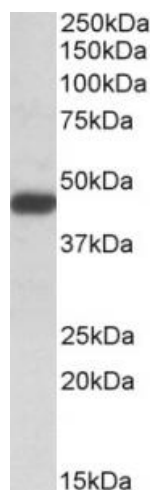
SDF4 Goat Polyclonal Antibody

Product data:

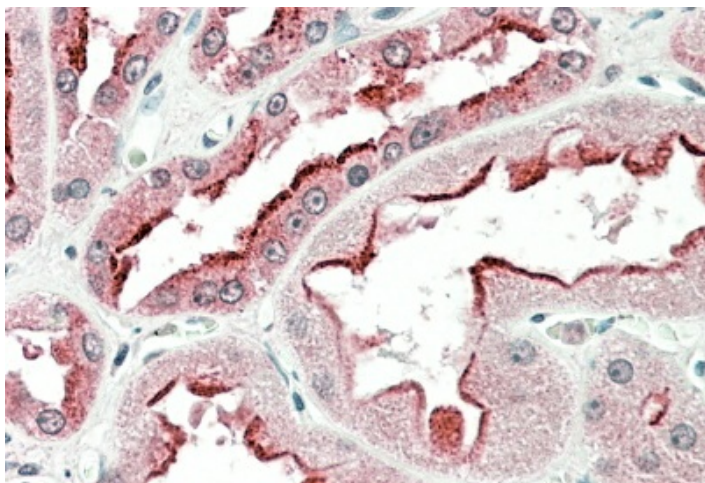
Product Type:	Primary Antibodies
Applications:	IHC, WB
Recommended Dilution:	WB 0.1-0.3ug/ml; IHC 5-10ug/ml
Reactivity:	Human (Expected from sequence similarity: Mouse, Rat, Dog, Cow)
Host:	Goat
Clonality:	Polyclonal
Immunogen:	Peptide with sequence C-EYKVKFLASKGHSEK, from the internal region of the protein sequence according to NP_057631.1; NP_057260.2.
Formulation:	Supplied at 0.5 mg/ml in Tris saline, 0.02% sodium azide, pH7.3 with 0.5% bovine serum albumin. Aliquot and store at -20C. Minimize freezing and thawing.
Concentration:	lot specific
Purification:	Purified from goat serum by ammonium sulphate precipitation followed by antigen affinity chromatography using the immunizing peptide.
Conjugation:	Unconjugated
Storage:	Store at -20°C as received.
Stability:	Stable for 12 months from date of receipt.
Gene Name:	stromal cell derived factor 4
Database Link:	NP_057631 Entrez Gene 20318 Mouse Entrez Gene 155173 Rat Entrez Gene 479572 Dog Entrez Gene 51150 Human Q9BRK5
Synonyms:	Cab45; SDF-4
Note:	IHC: In paraffin embedded Human Kidney shows preferential staining in the brush borders of epithelial cells.
Protein Families:	Transmembrane



[View online »](#)

Product images:

(0.1 ug/ml) staining of Jurkat lysate (35ug protein in RIPA buffer). Primary incubation was 1 hour. Detected by chemiluminescence.



TA311459 (5ug/ml) staining of paraffin embedded Human Kidney. Steamed antigen retrieval with citrate buffer pH 6, AP-staining.