

Product datasheet for **TA309981**

LIM kinase 2 (LIMK2) Rabbit Polyclonal Antibody

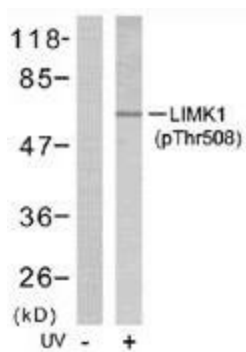
Product data:

Product Type:	Primary Antibodies
Applications:	IHC, WB
Recommended Dilution:	WB: 1:500~1:1000, IHC: 1:50~1:100
Reactivity:	Human, Mouse, Rat
Modifications:	Phospho-specific
Host:	Rabbit
Isotype:	IgG
Clonality:	Polyclonal
Immunogen:	The antiserum was produced against synthesized phosphopeptide derived from human LIMK2 around the phosphorylation site of threonine 505 (R-Y-TP-V-V).
Formulation:	phosphate buffered saline (without Mg ²⁺ and Ca ²⁺), pH 7.4, 150mM NaCl, 0.02% sodium azide and 50% glycerol.
Concentration:	lot specific
Purification:	The antibody was affinity-purified from rabbit antiserum by affinity-chromatography using epitope-specific phosphopeptide. The antibody against non-phosphopeptide was removed by chromatography using non-phosphopeptide corresponding to the phosphorylation site.
Conjugation:	Unconjugated
Storage:	Store at -20°C as received.
Stability:	Stable for 12 months from date of receipt.
Gene Name:	LIM domain kinase 2
Database Link:	NP_057952 Entrez Gene 16886 Mouse Entrez Gene 29524 Rat Entrez Gene 3985 Human P53671
Synonyms:	LIMK-2
Protein Families:	Druggable Genome, Protein Kinase
Protein Pathways:	Axon guidance, Fc gamma R-mediated phagocytosis, Regulation of actin cytoskeleton

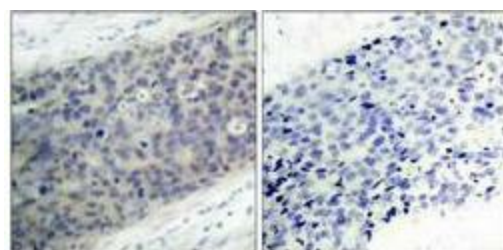


[View online »](#)

Product images:



Western blot analysis of extracts from NIH/3T3 cells treated and untreated with UV (60min), using LIMK1 (phospho-Thr505) antibody.



Immunohistochemistry analysis of paraffin-embedded human breast carcinoma tissue using LIMK1 (phospho-Thr505) antibody.