

## Product datasheet for **TA309842**

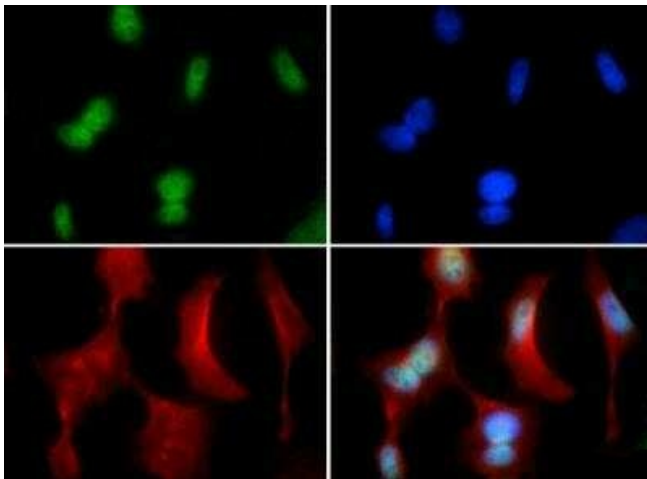
### **RUNX2 Rabbit Polyclonal Antibody**

#### **Product data:**

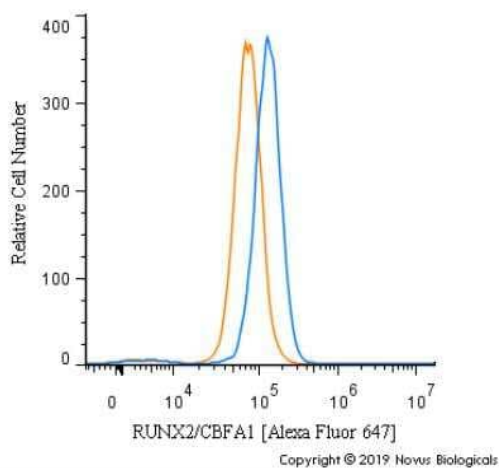
<b>Product Type:</b>	Primary Antibodies
<b>Applications:</b>	FC, ICC/IF, IHC
<b>Recommended Dilution:</b>	Immunohistochemistry-Paraffin: 1:200, Immunohistochemistry: 1:200, Immunocytochemistry/ Immunofluorescence: 1:50-1:100, Flow Cytometry: 2-5 ug/ml
<b>Reactivity:</b>	Human, Mouse
<b>Host:</b>	Rabbit
<b>Clonality:</b>	Polyclonal
<b>Immunogen:</b>	A synthetic peptide made to an internal region of the human RUNX2 protein (within residues 225-300). [Swiss-Prot Q13950]
<b>Formulation:</b>	PBS, 30% glycerol and 0.05% Sodium Azide
<b>Concentration:</b>	lot specific
<b>Purification:</b>	Affinity purified
<b>Conjugation:</b>	Unconjugated
<b>Storage:</b>	Store at -20°C as received.
<b>Stability:</b>	Stable for 12 months from date of receipt.
<b>Gene Name:</b>	runt related transcription factor 2
<b>Database Link:</b>	<a href="#">NP_004339</a> <a href="#">Entrez Gene 12393 Mouse</a> <a href="#">Entrez Gene 860 Human</a> <a href="#">Q13950</a>
<b>Synonyms:</b>	AML3; CBFA1; CCD; CCD1; OSF-2; OSF2; PEA2aA; PEBP2A1; PEBP2A2; PEBP2aA; PEBP2aA1
<b>Protein Families:</b>	Druggable Genome, Transcription Factors



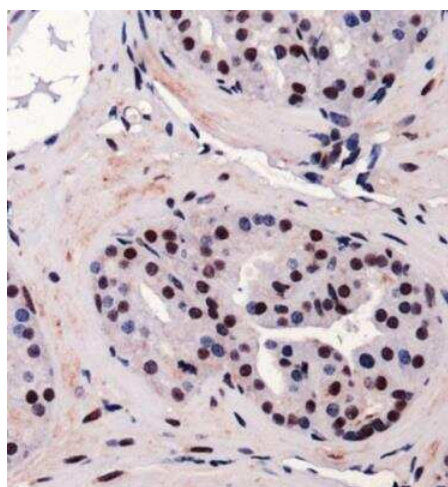
[View online »](#)

**Product images:**

Immunocytochemistry/Immunofluorescence: RUNX2/CBFA1 Antibody TA309842 - RUNX2 antibody was tested in HeLa cells with FITC (green). Nuclei and alpha-tubulin were counterstained with Dapi (blue) and Dylight 550 (red).



Flow Cytometry: RUNX2/CBFA1 Antibody TA309842 - An intracellular stain was performed on HeLa cells with RUNX2/CBFA1 Antibody TA309842AF647 (blue) and a matched isotype control (orange). Cells were fixed with 4% PFA and then permeabilized with 0.1% saponin. Cells were incubated in an antibody dilution of 5 ug/mL for 30 minutes at room temperature. Both antibodies were conjugated to Alexa Fluor 647.



Immunohistochemistry: RUNX2/CBFA1 Antibody TA309842 - Staining of RUNX2 in mouse prostate using DAB with hematoxylin counterstain.