

## Product datasheet for **TA309804**

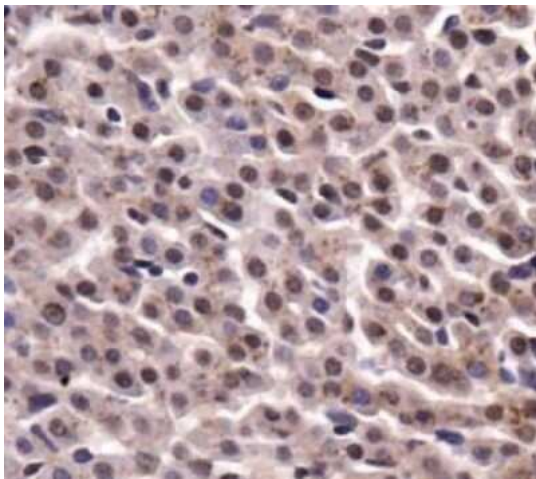
### **PKM2 (PKM) Rabbit Polyclonal Antibody**

#### **Product data:**

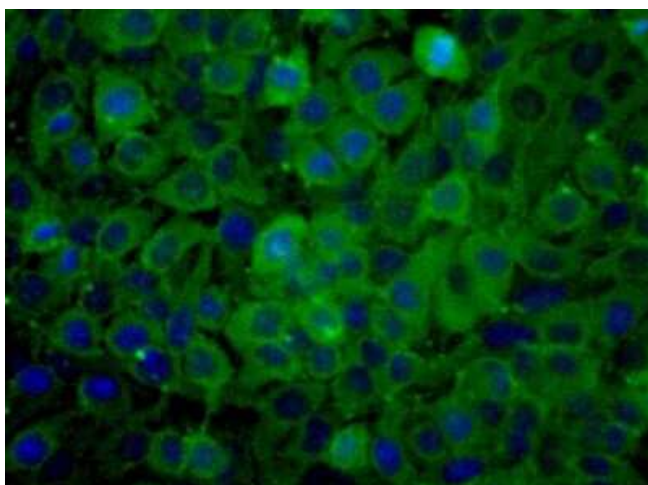
<b>Product Type:</b>	Primary Antibodies
<b>Applications:</b>	FC, ICC/IF, IHC, Immunoblotting, IP, Simple Western, WB
<b>Recommended Dilution:</b>	Flow Cytometry: 5 ug/ml, Knockdown Validated, Western Blot: 0.5 ug/ml, Immunohistochemistry: 1:100, Immunohistochemistry-Paraffin: 1:100, Simple Western: 1:12.5, Immunocytochemistry/ Immunofluorescence: 1:200, Immunoprecipitation, Immunoblotting
<b>Reactivity:</b>	Bovine, Human, Mouse, Rat
<b>Host:</b>	Rabbit
<b>Clonality:</b>	Polyclonal
<b>Immunogen:</b>	A synthetic peptide made to the internal region of human PKM2 protein (within residues 350-450). [Swiss-Prot# P14618]
<b>Formulation:</b>	PBS, 30% glycerol and 0.1% Sodium Azide
<b>Concentration:</b>	lot specific
<b>Purification:</b>	Immunogen affinity purified
<b>Conjugation:</b>	Unconjugated
<b>Storage:</b>	Store at -20°C as received.
<b>Stability:</b>	Stable for 12 months from date of receipt.
<b>Gene Name:</b>	pyruvate kinase, muscle
<b>Database Link:</b>	<a href="#">NP_872270</a> <a href="#">Entrez Gene 18746 Mouse</a> <a href="#">Entrez Gene 25630 Rat</a> <a href="#">Entrez Gene 5315 Human</a> <a href="#">P14618</a>
<b>Synonyms:</b>	CTHBP; HEL-S-30; OIP3; PK3; PKM2; TCB; THBP1
<b>Protein Families:</b>	Druggable Genome
<b>Protein Pathways:</b>	Glycolysis / Gluconeogenesis, Metabolic pathways, Purine metabolism, Pyruvate metabolism, Type II diabetes mellitus



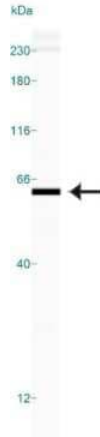
[View online »](#)

**Product images:**

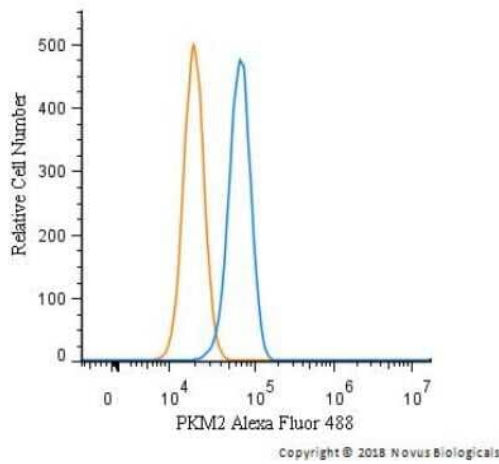
Immunohistochemistry: PKM2 Antibody - BSA Free TA309804 - Staining of PKM2 in mouse liver tissue.



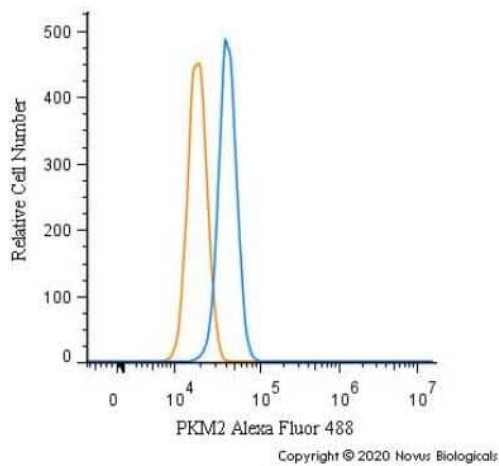
Immunocytochemistry/Immunofluorescence: PKM2 Antibody - BSA Free TA309804 - Analysis of PKM2 in HeLa cells.



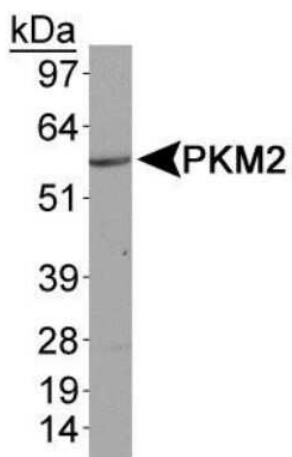
Simple Western: PKM2 Antibody - BSA Free TA309804 - Lane view shows a specific band for PKM2 in 0.1 mg/ml of HeLa lysate. This experiment was performed under reducing conditions using the 12-230kDa separation system. \* Non-specific interaction with the 230 kDa Simple Western standard may be seen with this antibody.



Flow Cytometry: PKM2 Antibody - BSA Free TA309804 - An intracellular stain was performed on HeLa cells with PKM2 Antibody TA309804AF488 (blue) and a matched isotype control (orange). Cells were fixed with 4% PFA and then permeabilized with 0.1% saponin. Cells were incubated in an antibody dilution of 5 ug/mL for 30 minutes at room temperature. Both antibodies were conjugated to Alexa Fluor 488.



Flow Cytometry: PKM2 Antibody - BSA Free TA309804 - An intracellular stain was performed on Neuro2a cells with PKM2 Antibody TA309804AF488 (blue) and a matched isotype control (orange). Cells were fixed with 4% PFA and then permeabilized with 0.1% saponin. Cells were incubated in an antibody dilution of 10 ug/mL for 30 minutes at room temperature. Both antibodies were conjugated to Alexa Fluor 488.



Western Blot: PKM2 Antibody - BSA Free  
TA309804 - Analysis of PKM2 in MCF7 whole cell  
lysates.