

Product datasheet for **TA309766**

Nkx3.1 (NKX3-1) Rabbit Polyclonal Antibody

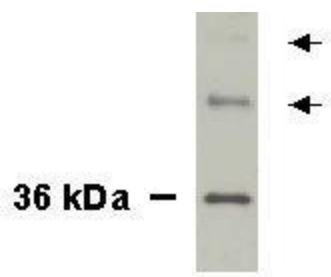
Product data:

Product Type:	Primary Antibodies
Applications:	WB
Recommended Dilution:	WB
Reactivity:	Human
Host:	Rabbit
Clonality:	Polyclonal
Immunogen:	A synthetic peptide made to residues 21-37 (TPSKPLTSFLIQDILRD) of human NKX3.1. This sequence is highly conserved in rat and mouse.
Formulation:	PBS with 0.02% Sodium Azide
Concentration:	lot specific
Purification:	Immunogen affinity purified
Conjugation:	Unconjugated
Storage:	Store at -20°C as received.
Stability:	Stable for 12 months from date of receipt.
Gene Name:	NK3 homeobox 1
Database Link:	NP_006158 Entrez Gene 4824 Human Q99801
Synonyms:	BAPX2; NKX3; NKX3.1; NKX3A
Protein Families:	Druggable Genome, Transcription Factors
Protein Pathways:	Pathways in cancer, Prostate cancer



[View online »](#)

Product images:



Detection of NKX3.1 in recombinant NKX3.1 protein (36 kDa) using anti-NKX3.1. The two higher MW bands represent a dimer and a trimer, as these occur in all studies of NKX3.1.