

## Product datasheet for **TA309763**

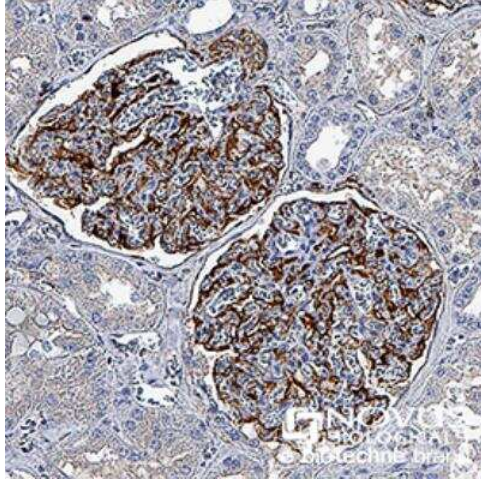
### Nestin (NES) Mouse Monoclonal Antibody [Clone ID: 10C2]

#### Product data:

Product Type:	Primary Antibodies
Clone Name:	10C2
Applications:	CyTOF-ready, FC, ICC/IF, IHC, WB
Recommended Dilution:	Immunohistochemistry: 1:100 - 1:200, Immunohistochemistry-Frozen: 1:100 - 1:200, Western Blot: 1:1000 - 1:5000, Immunocytochemistry/ Immunofluorescence: 1:50 - 1:200, Flow Cytometry: 1 ug per million cells, Immunohistochemistry-Paraffin: 1:100 - 1:200, CyTOF-ready
Reactivity:	Human
Host:	Mouse
Isotype:	IgG1, kappa
Clonality:	Monoclonal
Immunogen:	A fragment of the human nestin protein corresponding to residues 1464-1614.
Formulation:	PBS and 0.1% Sodium Azide
Purification:	Protein G purified
Conjugation:	Unconjugated
Storage:	Store at -20°C as received.
Stability:	Stable for 12 months from date of receipt.
Gene Name:	nestin
Database Link:	<a href="#">NP_006608</a> <a href="#">Entrez Gene 10763 Human P48681</a>
Synonyms:	Nbla00170
Protein Families:	ES Cell Differentiation/IPS

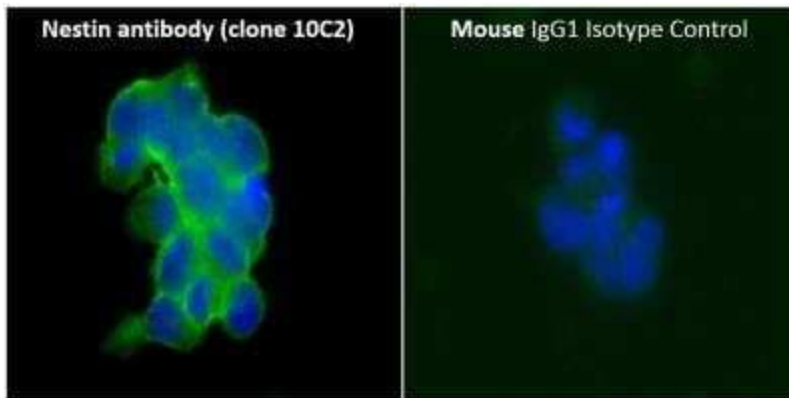


[View online »](#)

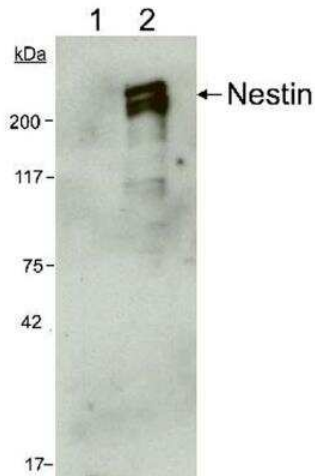
**Product images:**

Immunohistochemistry-Paraffin: Nestin Antibody (10C2) TA309763 - Nestin was detected in immersion fixed paraffin-embedded sections of human kidney using anti-human mouse monoclonal antibody (Catalog # TA309763) at 1:500 dilution overnight at 4C. Tissue was stained using the VisuCyte anti-mouse HRP polymer detection reagent (Catalog # VC001) with DAB chromogen (brown) and counterstained with hematoxylin (blue).

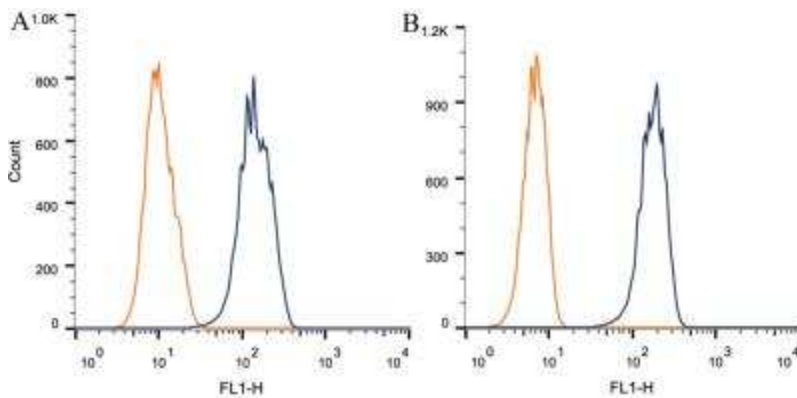
Images may not be copied, printed or otherwise disseminated without express written permission of Novus Biologicals a bio-technne brand.



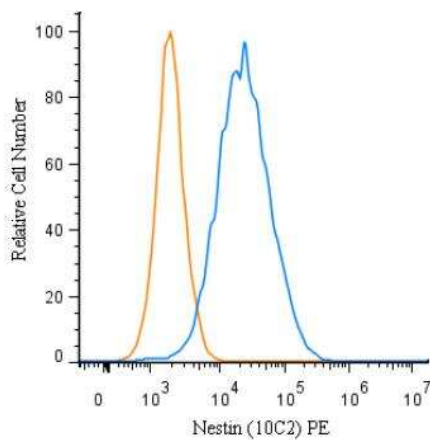
Immunocytochemistry/Immunofluorescence: Nestin Antibody (10C2) TA309763 - Analysis of formalin fixed, 0.1% Triton X-100 permeabilized F9 cells (Mouse teratocarcinoma) using Nestin antibody (clone 10C2) at 1:50 dilution. The primary antibody was detected using Alexa Fluor 488 labeled donkey anti-mouse IgG (H+L) cross-adsorbed secondary antibody (green) and nuclei were counterstained with DAPI (blue). An isotype control set was incubated with mouse IgG1 isotype control antibody and the above mentioned secondary antibody. Nestin antibody (clone 10C2) generated a specific membrane-cytoplasmic staining of Nestin while the isotype control samples did not show any staining under same assay conditions.



Western Blot: Nestin Antibody (10C2) TA309763 - WB analysis of 5 ug lysate from (1) Rat's total brain tissue, and (2) human CNS progenitor cells using Nestin antibody (clone 10C2) at 1:1000 dilution. The antibody did not react with rat, whereas, in lysate from human samples, it generated a doublet band representing the phosphorylated and the non-phosphorylated forms of Nestin protein.

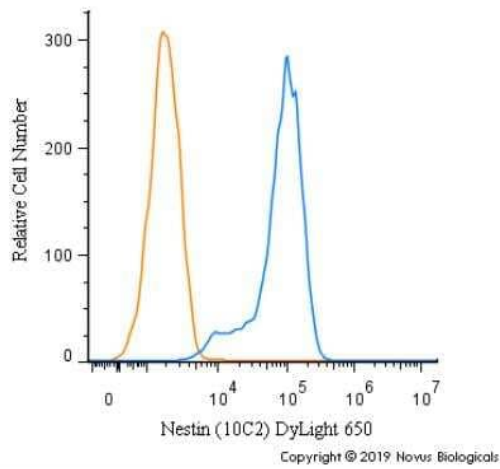


Flow Cytometry: Nestin Antibody (10C2) TA309763 - Intracellular flow cytometric staining of  $1 \times 10^6$  CHO (A) and HEK-293 (B) cells using Nestin antibody (dark blue). Isotype control shown in orange. An antibody concentration of  $1 \mu\text{g}/1 \times 10^6$  cells was used.



Flow Cytometry: Nestin Antibody (10C2) TA309763 - An intracellular stain was performed on HeLa cells with Nestin Antibody (10C2)TA309763PE (blue) and a matched isotype control (orange). Cells were fixed with 4% PFA and then permeabilized with 0.1% saponin. Cells were incubated in an antibody dilution of 2.5  $\mu\text{g}/\text{mL}$  for 30 minutes at room temperature. Both antibodies were conjugated to phycoerythrin.

Copyright © 2018 Novus Biologicals



Flow Cytometry: Nestin Antibody (10C2) TA309763 - An intracellular stain was performed on SH-SY5Y cells with Nestin [10C2] Antibody [TA309763C] (blue) and a matched isotype control (orange). Cells were fixed with 4% PFA and then permeabilized with 0.1% saponin. Cells were incubated in an antibody dilution of 2.5 ug/mL for 30 minutes at room temperature. Both antibodies were conjugated to DyLight 650.