

Product datasheet for **TA309745**

Mucolipin 1 (MCOLN1) Rabbit Polyclonal Antibody

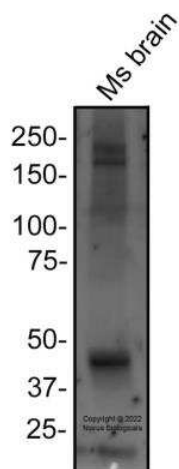
Product data:

Product Type:	Primary Antibodies
Applications:	Simple Western, WB
Recommended Dilution:	Western Blot: 0.1-0.5 ug/ml, Simple Western: 1:40
Reactivity:	Human, Mouse, Rat
Host:	Rabbit
Clonality:	Polyclonal
Immunogen:	Synthetic peptide made to a C-terminal portion of the mouse protein (within residues 500-580). [Swiss-Prot# Q99J21]
Formulation:	PBS, 30% glycerol and 0.1% Sodium Azide
Concentration:	lot specific
Purification:	Peptide affinity purified
Conjugation:	Unconjugated
Storage:	Store at -20°C as received.
Stability:	Stable for 12 months from date of receipt.
Gene Name:	mucolipin 1
Database Link:	NP_065394 Entrez Gene 94178 MouseEntrez Gene 288371 RatEntrez Gene 57192 Human Q9GZU1
Synonyms:	MG-2; ML4; MLIV; MST080; MSTP080; TRP-ML1; TRPM-L1; TRPML1
Protein Families:	Druggable Genome, Ion Channels: Transient receptor potential, Transmembrane

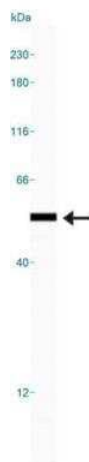


[View online »](#)

Product images:



Western Blot: Mucolipin 1 Antibody TA309745 - Total protein from mouse brain was separated on a 7.5% gel by SDS-PAGE, transferred to PVDF membrane and blocked in 5% non-fat milk in TBST. The membrane was probed with 2.0 ug/ml anti-Mucolipin 1 (TA309745) in blocking buffer and detected with an anti-rabbit HRP secondary antibody using NovaLume chemiluminescence detection reagent (NPB2-61915).



Simple Western: Mucolipin 1 Antibody TA309745 - Lane view shows a specific band for Mucolipin 1 in 0.5 mg/ml of Human Brain lysate. This experiment was performed under reducing conditions using the 12-230 kDa separation system.