

Product datasheet for **TA309739**

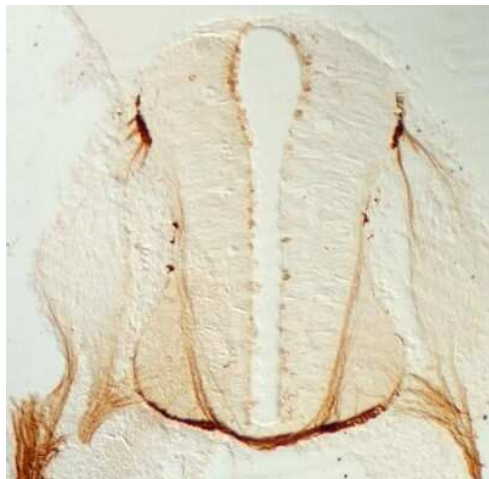
MAP1B Rabbit Polyclonal Antibody [Clone ID: SuperBUGS]

Product data:

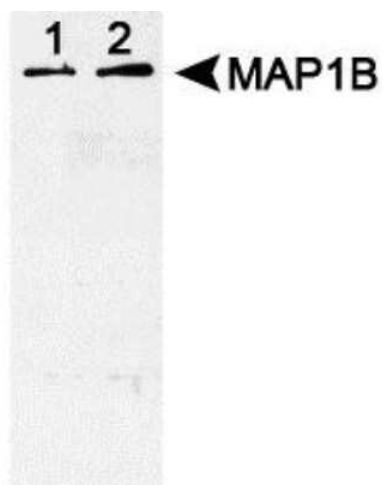
Product Type:	Primary Antibodies
Clone Name:	SuperBUGS
Applications:	ICC/IF, IHC, WB
Recommended Dilution:	Immunohistochemistry: 1:1000, Immunocytochemistry/ Immunofluorescence: 1:200, Western Blot: 1:1000-1:3000, Immunohistochemistry-Frozen: 1:1000
Reactivity:	Chicken, Human, Mouse, Rat, Xenopus
Host:	Rabbit
Isotype:	IgG
Clonality:	Polyclonal
Immunogen:	Phosphopeptide made to a C-terminal portion of rat MAP1B. [Swiss-Prot# P15205]
Formulation:	PBS and 0.05% Sodium Azide
Purification:	Affinity purified
Conjugation:	Unconjugated
Storage:	Store at -20°C as received.
Stability:	Stable for 12 months from date of receipt.
Gene Name:	microtubule associated protein 1B
Database Link:	NP_005900 Entrez Gene 17755 Mouse Entrez Gene 29456 Rat Entrez Gene 4131 Human P46821
Synonyms:	FUTSCH; MAP5; PPP1R102



[View online »](#)

Product images:

Immunohistochemistry: MAP1B [p Thr1265]
Antibody - SuperBUGS TA309739 -
Immunohistochemical analysis of rat spinal cord
transverse section from an E12 embryo.



Western Blot: MAP1B [p Thr1265] Antibody -
SuperBUGS TA309739 - Analysis of
phosphorylated MAP1B in chick embryos (lane 1)
and rat neonatal brain (lane 2).