

Product datasheet for **TA309731**

Lamin A (LMNA) Mouse Monoclonal Antibody [Clone ID: 5H8-B4]

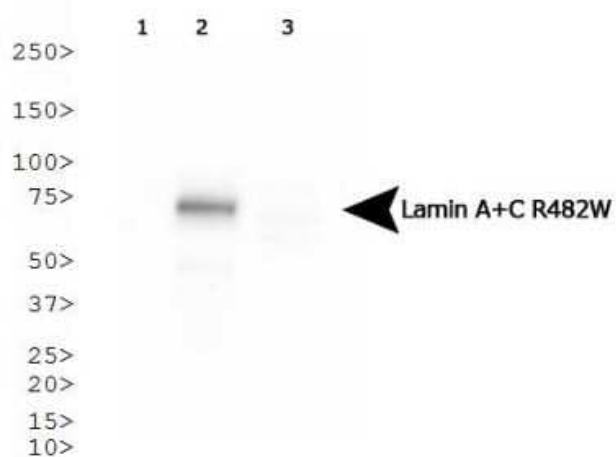
Product data:

Product Type:	Primary Antibodies
Clone Name:	5H8-B4
Applications:	ELISA, ICC/IF, IP, WB
Recommended Dilution:	Western Blot: 1:1000, ELISA: 1:100-1:2000, Immunocytochemistry/ Immunofluorescence: 1:10-1:2000, Immunoprecipitation: 1:10-1:500
Reactivity:	Human
Host:	Mouse
Isotype:	IgG1, kappa
Clonality:	Monoclonal
Immunogen:	Hepatitis B Virus Capsid Antigen (HBcAg) Lamin A + C Ig-fold R482W fusion protein.
Formulation:	0.1% Sodium Azide
Purification:	Ascites
Conjugation:	Unconjugated
Storage:	Store at -20°C as received.
Stability:	Stable for 12 months from date of receipt.
Gene Name:	lamin A/C
Database Link:	NP_005563 Entrez Gene 4000 Human P02545
Synonyms:	CDCD1; CDDC; CMD1A; CMT2B1; EMD2; FPL; FPLD; FPLD2; HGPS; IDC; LDP1; LFP; LGMD1B; LMN1; LMNC
Protein Families:	Druggable Genome
Protein Pathways:	Arrhythmogenic right ventricular cardiomyopathy (ARVC), Dilated cardiomyopathy, Hypertrophic cardiomyopathy (HCM)



[View online »](#)

Product images:



Western Blot: Lamin A + C R482W Antibody (5H8-B4) TA309731 - Analysis of Lamin A + C R482W in HeLa cells transfected with Flag-tagged Lamin A 1) wild type, 2) R482W and 3) R453W.