

Product datasheet for **TA309711**

KDM4C Rabbit Polyclonal Antibody

Product data:

Product Type:	Primary Antibodies
Applications:	ChIP, ICC/IF, IHC, IP, Simple Western, WB
Recommended Dilution:	Immunohistochemistry: 1:100, Immunocytochemistry/ Immunofluorescence: 1:100, Immunohistochemistry-Paraffin: 1:100, Simple Western: 1:12.5, Western Blot: 1:1000, Chromatin Immunoprecipitation (ChIP), Chromatin Immunoprecipitation, Immunoprecipitation
Reactivity:	Human, Mouse
Host:	Rabbit
Clonality:	Polyclonal
Immunogen:	A genomic peptide made to an internal region of the human JMJD2C protein (within residues 450-600). [Swiss-Prot Q9H3R0]
Formulation:	PBS, 50% glycerol and 0.05% Sodium Azide
Concentration:	lot specific
Purification:	Affinity purified
Conjugation:	Unconjugated
Storage:	Store at -20°C as received.
Stability:	Stable for 12 months from date of receipt.
Gene Name:	lysine demethylase 4C
Database Link:	NP_001140166 Entrez Gene 76804 Mouse Entrez Gene 23081 Human Q9H3R0
Synonyms:	bA146B14.1; GASC1; JHDM3C; JMJD2C; TDRD14C
Protein Families:	Druggable Genome, Transcription Factors



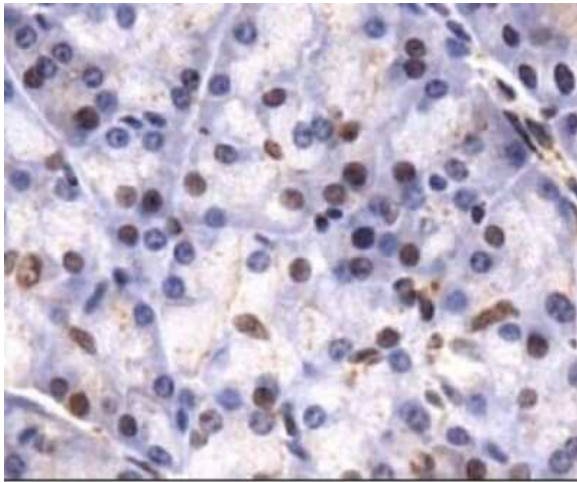
[View online »](#)

Product images:

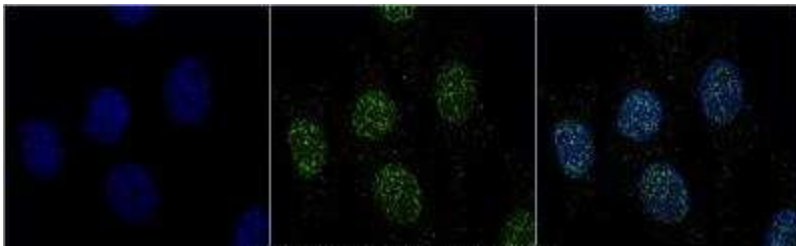
Simple Western: Lysine (K)-specific Demethylase 4C/KDM4C/JMJD2C Antibody TA309711 - Simple Western lane view shows a specific band for JMJD2C in 1.0 mg/ml of HeLa lysate. This experiment was performed under reducing conditions using the 12-230 kDa separation system.



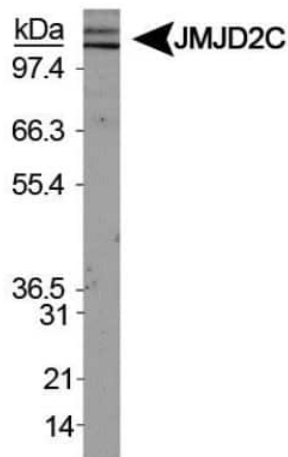
Immunocytochemistry/Immunofluorescence: Lysine (K)-specific Demethylase 4C/KDM4C/JMJD2C Antibody TA309711 - HeLa cells were fixed in 4% paraformaldehyde for 10 minutes and permeabilized in 0.5% Triton X-100 in PBS for 5 minutes. The cells were incubated with anti-Lysine (K)-specific Demethylase 4C/KDM4C/JMJD2C Antibody TA309711 at 2 ug/ml overnight at 4C and detected with an anti-rabbit Dylight 488 (Green) at a 1:1000 dilution for 60 minutes. Nuclei were counterstained with DAPI (Blue). Cells were imaged using a 100X objective and digitally deconvolved.



Immunohistochemistry-Paraffin: Lysine (K)-specific Demethylase 4C/KDM4C/JMJD2C Antibody TA309711 - Staining of JMJD2C in paraffin embedded mouse pancreas using DAB with hematoxylin counterstain.



Immunocytochemistry/Immunofluorescence: Lysine (K)-specific Demethylase 4C/KDM4C/JMJD2C Antibody TA309711 - NIH3T3 cells were fixed in 4% paraformaldehyde for 10 minutes and permeabilized in 0.5% Triton X-100 in PBS for 5 minutes. The cells were incubated with anti-Lysine (K)-specific Demethylase 4C/KDM4C/JMJD2C Antibody TA309711 at 2 ug/ml overnight at 4C and detected with an anti-rabbit Dylight 488 (Green) at a 1:1000 dilution for 60 minutes. Nuclei were counterstained with DAPI (Blue). Cells were imaged using a 100X objective and digitally deconvolved.



Western Blot: Lysine (K)-specific Demethylase 4C/KDM4C/JMJD2C Antibody TA309711 - Analysis of JMJD2C in HeLa nuclear extracts.