

Product datasheet for **TA309690**

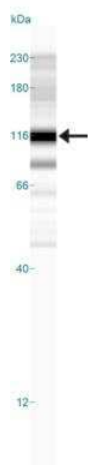
HIF-1 alpha (HIF1A) Mouse Monoclonal Antibody [Clone ID: ESEE122]

Product data:

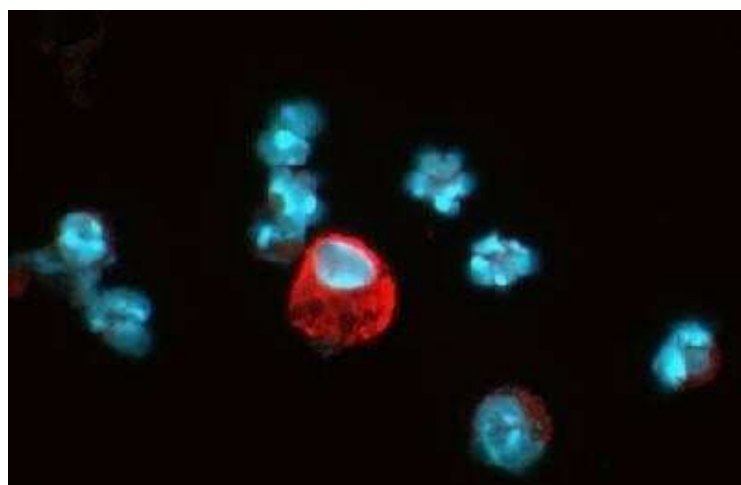
Product Type:	Primary Antibodies
Clone Name:	ESEE122
Applications:	FC, ICC/IF, IHC, Immunoblotting, IP, Simple Western, WB
Recommended Dilution:	Western Blot: 1:500-1:1000, Simple Western: 1:2000, Immunohistochemistry: 1:100-1:5000, Immunohistochemistry-Frozen: 1:100-1:5000, Immunohistochemistry-Paraffin: 1:100-1:5000, Immunoblotting, Immunoprecipitation: 1:10-1:500, Immunocytochemistry/ Immunofluorescence: 1:100, Flow Cytometry
Reactivity:	Bovine, Canine, Human, Mouse, Rat
Host:	Mouse
Isotype:	IgG1
Clonality:	Monoclonal
Immunogen:	Human HIF-1 alpha amino acids 329-530.
Formulation:	Tris-glycine, 150mM NaCl, 0.05% Sodium Azide and 0.05% Sodium Azide
Purification:	Protein G purified
Conjugation:	Unconjugated
Storage:	Store at -20°C as received.
Stability:	Stable for 12 months from date of receipt.
Gene Name:	hypoxia inducible factor 1 alpha subunit
Database Link:	NP_001521 Entrez Gene 15251 Mouse Entrez Gene 29560 Rat Entrez Gene 3091 Human Q16665
Synonyms:	bHLHe78; HIF-1-alpha; HIF-1A; HIF-1alpha; HIF1; HIF1-ALPHA; MOP1; PASD8
Protein Families:	Transcription Factors
Protein Pathways:	mTOR signaling pathway, Pathways in cancer, Renal cell carcinoma



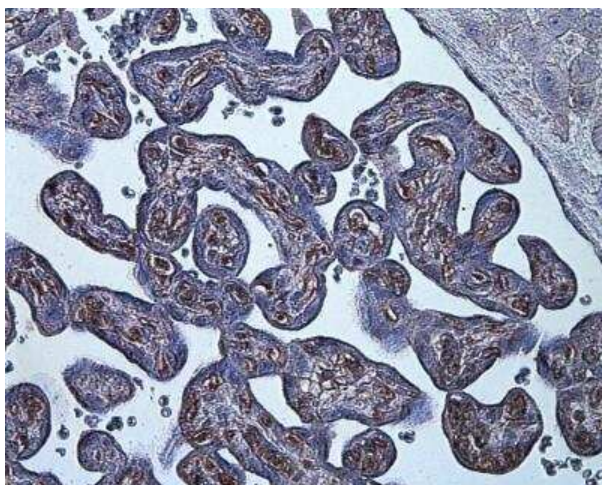
[View online »](#)

Product images:

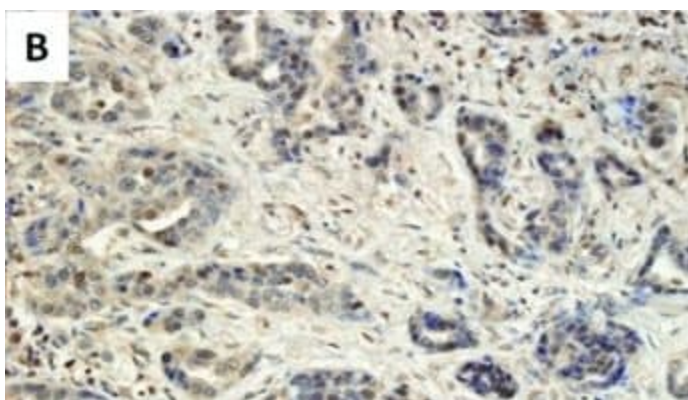
Simple Western: HIF-1 alpha Antibody (ESEE122) TA309690 - Image shows a specific band for HIF-1 alpha in 0.5 mg/mL of Hypoxic HeLa lysate. This experiment was performed under reducing conditions using the 12-230 kDa separation system.



Immunocytochemistry/Immunofluorescence: HIF-1 alpha Antibody (ESEE122) TA309690 - Detection of HIF-1 alpha (red dye) in a cell cytospin from a lavage of a murine skin pouch infected with *S. aureus*. 100X magnification. Blue: DAPI nuclear staining.



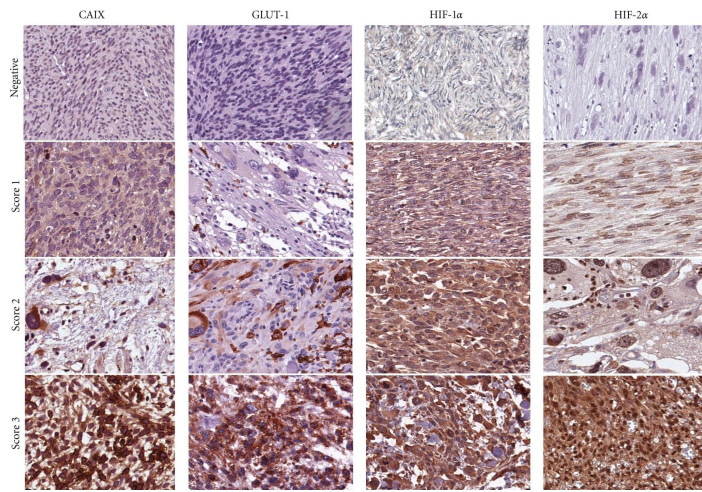
Immunohistochemistry: HIF-1 alpha Antibody (ESEE122) TA309690 - HIF-1 alpha staining in hypoxia-induced human placenta.



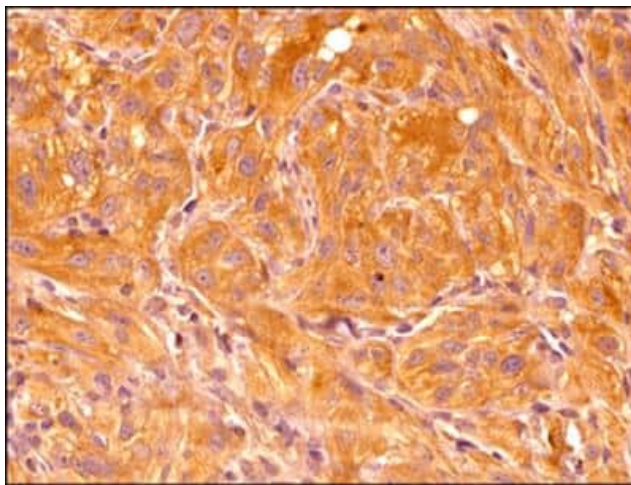
Positive immunohistochemical staining for (A) VEGF, (B) HIF-1 α , (C) Dll4 (tumor cells), (D) Dll4 (endothelial cells), and (E) CD31 (for microvessel counting, $\times 200$ magnification).



Immunohistochemistry-Paraffin: HIF-1 alpha Antibody (ESEE122) TA309690 - Negative control stain of human placenta (from sea level) using mouse IgG at 1:100. 4uM paraffin-embedded section.



Immunohistochemical analysis in non-GIST STS representing negative, and score 1–3 of CAIX, GLUT-1, HIF-1 α , and HIF-2 α . non-GIST STS: non-gastrointestinal stromal tumor soft-tissue sarcomas, CAIX: carbonic anhydrase IX, GLUT-1: glucose transporter-1, and HIF-1/2 α : hypoxia induced factor 1/2 α .



Immunohistochemistry-Paraffin: HIF-1 alpha Antibody (ESEE122) TA309690 - Analysis of a FFPE tissue section of human renal cancer xenograft using HIF-1 alpha antibody (TA309690 Lot 83115) at 1:200 dilution. The antibody generated a strong cytoplasmic staining mainly in the cancer cells. Only a fraction of cells depicted nuclear staining, while weak to negligible positivity was seen in the tumor stromal cells.