

## Product datasheet for **TA309614**

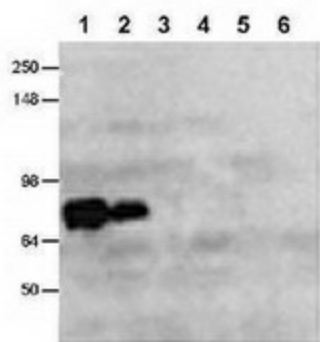
### CLACP (COL25A1) Rabbit Polyclonal Antibody

#### Product data:

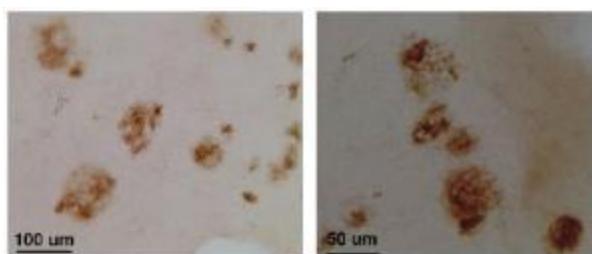
Product Type:	Primary Antibodies
Applications:	IHC, WB
Recommended Dilution:	WB, IHC
Reactivity:	Human
Host:	Rabbit
Clonality:	Polyclonal
Immunogen:	A synthetic peptide mapping to residues 430-443 [DYNGNLHEALQRIT] of the NC3 region of human and mouse CLAC-P.
Formulation:	PBS with 0.02% Sodium Azide
Concentration:	lot specific
Purification:	Immunogen affinity purified
Conjugation:	Unconjugated
Storage:	Store at -20°C as received.
Stability:	Stable for 12 months from date of receipt.
Gene Name:	collagen type XXV alpha 1
Database Link:	<a href="#">NP_942014</a> <a href="#">Entrez Gene 84570 Human</a> <a href="#">Q9BXS0</a>
Synonyms:	AMY; CFEOM5; CLAC; CLAC-P; CLACP
Protein Families:	Transmembrane



[View online »](#)

**Product images:**

Western Blot: CLACP Antibody - Western blot of stable HEK293 cell line expressing CLACP using anti-CLACP. Lane 1: full-length CLACP (lysate). Lane 2: secreted form of CLACP (media). Lane 3: COLXIII (lysate). Lane 4 degrees COLXIII (media). Lane 5: COLXXIII (lysate). Lane 6: COLXXIII (media).



Immunostain of the neocortex of Alzheimer's diseased brain sections (floating, fixed with 10% formalin for 24 hrs) using. At high magnification, TA309614 stains senile plaques.