

Product datasheet for **TA309252**

Mapt Rabbit Polyclonal Antibody

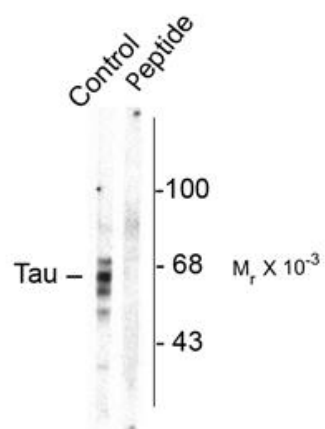
Product data:

Product Type:	Primary Antibodies
Applications:	WB
Recommended Dilution:	WB: 1:1000
Reactivity:	Rat
Modifications:	Phospho-specific
Host:	Rabbit
Isotype:	IgG
Clonality:	Polyclonal
Immunogen:	Synthetic phospho-peptide corresponding to amino acid residues surrounding Ser416 conjugated to KLH
Formulation:	100 µl in 10 mM HEPES (pH 7.5), 150 mM NaCl, 100 µg per ml BSA and 50% glycerol.
Purification:	Affinity Purified
Conjugation:	Unconjugated
Storage:	Store at -20°C as received.
Stability:	Stable for 12 months from date of receipt.
Predicted Protein Size:	59/65/68 kDa
Gene Name:	microtubule-associated protein tau
Database Link:	NP_058908 Entrez Gene 29477 Rat
Synonyms:	DDPAC; FLJ31424; FTDP-17; MAPTL; MGC138549; MSTD; MTBT1; MTBT2; PHF-tau; PPND; TAU



[View online »](#)

Product images:



Western blot of rat brain homogenate showing specific immunolabeling of the ~59, 65, 68k Tau isoforms phosphorylated at Ser416 (control). Immunolabeling is blocked by preadsorption with the phospho-peptide used as antigen (Peptide) but not by the corresponding dephospho-peptide (not shown).