

Product datasheet for **TA309227**

Raf1 Rabbit Polyclonal Antibody

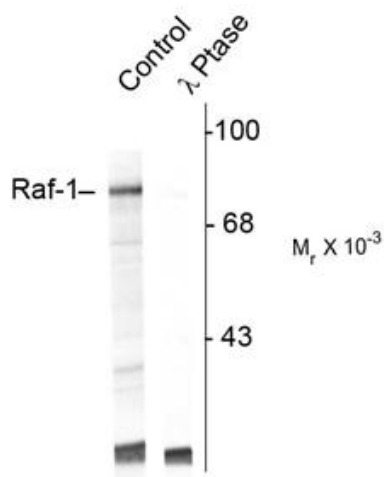
Product data:

Product Type:	Primary Antibodies
Applications:	WB
Recommended Dilution:	WB: 1:1000
Reactivity:	Rat, Human
Modifications:	Phospho-specific
Host:	Rabbit
Isotype:	IgG
Clonality:	Polyclonal
Immunogen:	Synthetic phospho-peptide corresponding to amino acid residues surrounding Ser301 conjugated to KLH
Formulation:	100 µl in 10 mM HEPES (pH 7.5), 150 mM NaCl, 100 µg per ml BSA and 50% glycerol.
Purification:	Affinity Purified
Conjugation:	Unconjugated
Storage:	Store at -20°C as received.
Stability:	Stable for 12 months from date of receipt.
Predicted Protein Size:	74 kDa
Gene Name:	Raf-1 proto-oncogene, serine/threonine kinase
Database Link:	NP_036771 Entrez Gene 5894 Human Entrez Gene 24703 Rat P11345
Synonyms:	C-RAF; CRAF; NS5; RAF; Raf-1



[View online »](#)

Product images:



Western blot of UV treated human Jurkat cell lysate showing specific immunolabeling of the ~74k Raf-1 protein (Control). The phosphospecificity of this labeling is shown in the second lane (lambda-phosphatase: λ-Ptase). The blot is identical to the control except that it was incubated in λ-Ptase (1200 units for 30 min) before being exposed to the phospho Ser301 Raf-1 antibody. The immunolabeling of Raf-1 is completely eliminated by treatment with λ-Ptase.