

Product datasheet for **TA309100**

Gja1 Rabbit Polyclonal Antibody

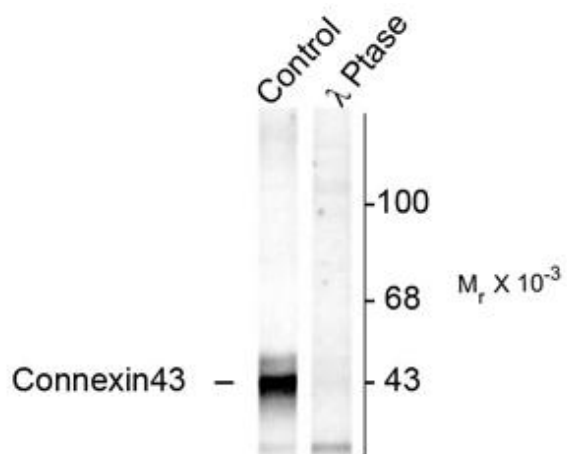
Product data:

Product Type:	Primary Antibodies
Applications:	WB
Recommended Dilution:	WB: 1:1000
Reactivity:	Rat
Modifications:	Phospho-specific
Host:	Rabbit
Isotype:	IgG
Clonality:	Polyclonal
Immunogen:	Synthetic phospho-peptide corresponding to amino acid residues surrounding Ser368 conjugated to KLH
Formulation:	100 µl in 10 mM HEPES (pH 7.5), 150 mM NaCl, 100 µg per ml BSA and 50% glycerol.
Purification:	Affinity Purified
Conjugation:	Unconjugated
Storage:	Store at -20°C as received.
Stability:	Stable for 12 months from date of receipt.
Predicted Protein Size:	43 kDa
Gene Name:	gap junction protein, alpha 1
Database Link:	NP_036699 Entrez Gene 24392 Rat P08050
Synonyms:	Connexin-43; CX43; DFNB38; GJAL; HSS; ODD; ODDD; ODOD; SDTY3



[View online »](#)

Product images:



Western blot of rat hippocampal lysate showing specific immunolabeling of the ~43k connexin43 phosphorylated at Ser368 (Control). The phosphospecificity of this labeling is shown in the second lane (lambda-phosphatase: λ-Ptase). The blot is identical to the control except that it was incubated in λ-Ptase (1200 units for 30 min) before being exposed to the phospho-Ser368 connexin43 antibody. The immunolabeling of connexin43 is completely eliminated by treatment with λ-Ptase.