

Product datasheet for **TA309087**

Camk2a Rabbit Polyclonal Antibody

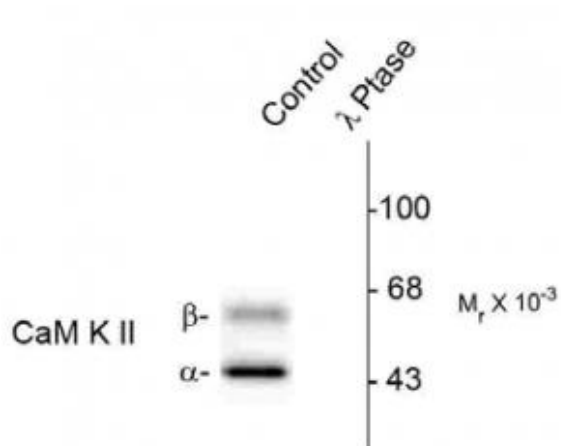
Product data:

Product Type:	Primary Antibodies
Applications:	WB
Recommended Dilution:	WB: 1:1000
Reactivity:	Rat
Modifications:	Phospho-specific
Host:	Rabbit
Isotype:	IgG
Clonality:	Polyclonal
Immunogen:	Synthetic phospho-peptide corresponding to amino acid residues surrounding Thr286 conjugated to KLH
Formulation:	100 µl in 10 mM HEPES (pH 7.5), 150 mM NaCl, 100 µg per ml BSA and 50% glycerol.
Purification:	Affinity Purified
Conjugation:	Unconjugated
Storage:	Store at -20°C as received.
Stability:	Stable for 12 months from date of receipt.
Predicted Protein Size:	50/60 kDa
Gene Name:	calcium/calmodulin-dependent protein kinase II alpha
Database Link:	NP_033922 Entrez Gene 25400 Rat P11798
Synonyms:	CAMKA; CaMKIINalpha; KIAA0968



[View online »](#)

Product images:



Western blot of rat brain lysate showing specific immunolabeling of the ~50k $\hat{\iota}$ - and the ~60k $\hat{\iota}$ - CaM Kinase II phosphorylated at Thr286 (Control). The phosphospecificity of this labeling is shown in the second lane (lambda-phosphatase: $\hat{\iota}$ -Ptase). The blot is identical to the control except that it was incubated in $\hat{\iota}$ -Ptase (1200 units for 30 min) before being exposed to the Anti-Thr286 CaM Kinase II. The immunolabeling is completely eliminated by treatment with $\hat{\iota}$ -Ptase.