

Product datasheet for **TA309018**

C20orf11 (GID8) Rabbit Polyclonal Antibody

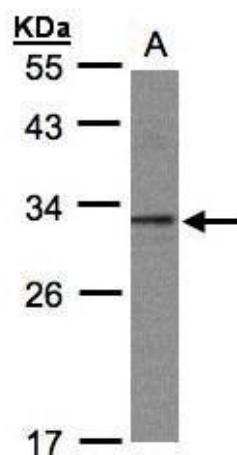
Product data:

Product Type:	Primary Antibodies
Applications:	IF, IHC, WB
Recommended Dilution:	ICC/IF:1:100-1:1000; IHC:1:100-1:1000; WB:1:500-1:3000
Reactivity:	Human (Predicted: Xenopus)
Host:	Rabbit
Isotype:	IgG
Clonality:	Polyclonal
Immunogen:	Recombinant fragment corresponding to a region within amino acids 1 and 208 of C20orf11 (Uniprot ID#Q9NWU2)
Formulation:	0.1M Tris, 0.1M Glycine, 10% Glycerol (pH7). 0.01% Thimerosal was added as a preservative.
Concentration:	lot specific
Purification:	Purified by antigen-affinity chromatography.
Conjugation:	Unconjugated
Storage:	Store at -20°C as received.
Stability:	Stable for 12 months from date of receipt.
Predicted Protein Size:	27 kDa
Gene Name:	GID complex subunit 8 homolog
Database Link:	NP_060366 Entrez Gene 54994 Human Q9NWU2
Synonyms:	C20orf11; TWA1
Note:	Seq homology of immunogen across species: Xenopus laevis (96%)

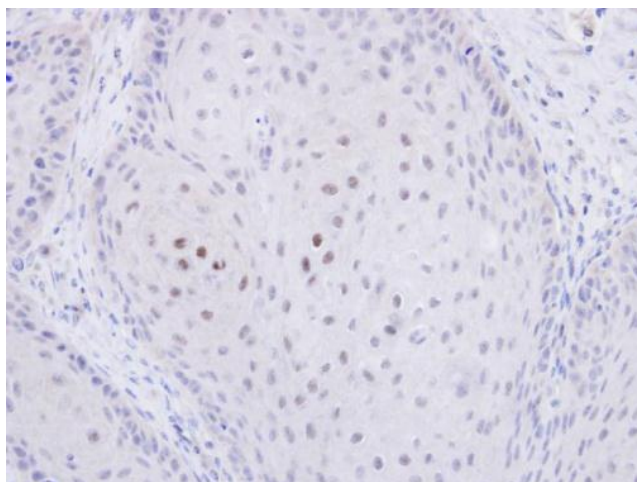


[View online »](#)

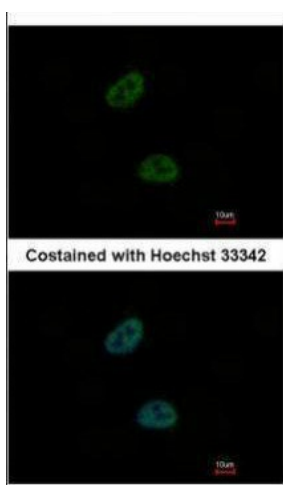
Product images:



Sample (30 ug whole cell lysate). A:293T. 12% SDS PAGE. TA309018 diluted at 1:1000



Immunohistochemical analysis of paraffin-embedded Cal27 xenograft, using C20orf11 (TA309018) antibody at 1:500 dilution.



Immunofluorescence analysis of paraformaldehyde-fixed HeLa, using C20orf11 (TA309018) antibody at 1:1000 dilution.