

Product datasheet for **TA308965**

SMC1 (SMC1A) Rabbit Polyclonal Antibody

Product data:

Product Type:	Primary Antibodies
Applications:	IHC, IP, WB
Recommended Dilution:	IHC:1:100-1:1000; WB:1:1000-1:10000
Reactivity:	Human (Predicted: Mouse, Bovine)
Host:	Rabbit
Isotype:	IgG
Clonality:	Polyclonal
Immunogen:	Recombinant fragment corresponding to a region within amino acids 1 and 248 of SMC1A (Uniprot ID#Q14683)
Formulation:	0.1M Tris, 0.1M Glycine, 10% Glycerol (pH7). 0.01% Thimerosal was added as a preservative.
Concentration:	lot specific
Purification:	Purified by antigen-affinity chromatography.
Conjugation:	Unconjugated
Storage:	Store at -20°C as received.
Stability:	Stable for 12 months from date of receipt.
Predicted Protein Size:	143 kDa
Gene Name:	structural maintenance of chromosomes 1A
Database Link:	NP_006297 Entrez Gene 24061 Mouse Entrez Gene 8243 Human Q14683



[View online »](#)

Background: Proper cohesion of sister chromatids is a prerequisite for the correct segregation of chromosomes during cell division. The cohesin multiprotein complex is required for sister chromatid cohesion. This complex is composed partly of two structural maintenance of chromosomes (SMC) proteins, SMC3 and either SMC1L2 or the protein encoded by this gene. Most of the cohesin complexes dissociate from the chromosomes before mitosis, although those complexes at the kinetochore remain. Therefore, the encoded protein is thought to be an important part of functional kinetochores. In addition, this protein interacts with BRCA1 and is phosphorylated by ATM, indicating a potential role for this protein in DNA repair. This gene, which belongs to the SMC gene family, is located in an area of the X-chromosome that escapes X inactivation. [provided by RefSeq]

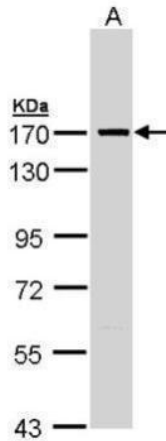
Synonyms: CDLS2; DXS423E; SB1.8; SMC1; SMC1alpha; SMC1L1; SMCB

Note: Seq homology of immunogen across species: Mouse (100%), Bovine (100%)

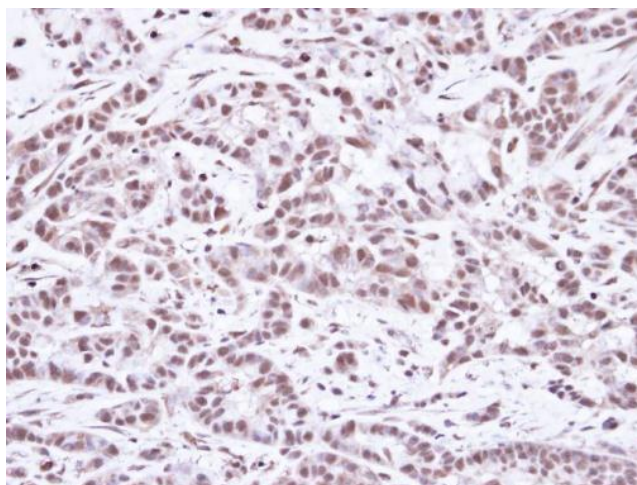
Protein Families: Druggable Genome

Protein Pathways: Cell cycle, Oocyte meiosis

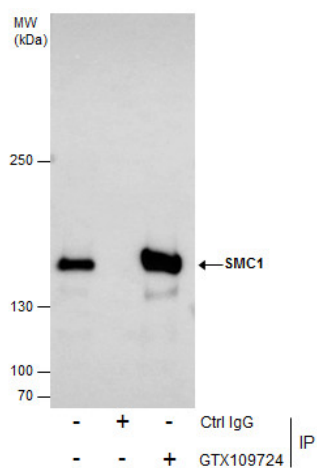
Product images:



Sample (30 ug of whole cell lysate). A: Molt-4.
7.5% SDS PAGE. TA308965 diluted at 1:5000



Immunohistochemical analysis of paraffin-embedded A549 Xenograft, using SMC1A (TA308965) antibody at 1:100 dilution.



Immunoprecipitation of SMC1A protein from 293T whole cell extracts using 5 ug of SMC1A antibody [N1N2], N-term (TA308965). Western blot analysis was performed using SMC1A antibody [N1N2], N-term (TA308965). An anti-rabbit IgG was used as a secondary reagent.