

Product datasheet for **TA308837**

Actin (ACTA1) Rabbit Polyclonal Antibody

Product data:

Product Type:	Primary Antibodies
Applications:	IHC, WB
Recommended Dilution:	WB 1:1000 - 1:10000, IHC:1:100 - 1:1000
Reactivity:	Human, Mouse (Predicted: Rat, Pig, Chicken, Bovine)
Host:	Rabbit
Isotype:	IgG
Clonality:	Polyclonal
Immunogen:	Recombinant protein fragment contain a sequence corresponding to a region within amino acids 1 and 377 of alpha Actin (skeletal muscle)
Formulation:	1XPBS, 20% Glycerol (pH7). 0.025% ProClin 300 was added as a preservative.
Concentration:	lot specific
Purification:	Purified by antigen-affinity chromatography.
Conjugation:	Unconjugated
Storage:	Store at -20°C as received.
Stability:	Stable for 12 months from date of receipt.
Predicted Protein Size:	42 kDa
Gene Name:	actin, alpha 1, skeletal muscle
Database Link:	NP_001091 Entrez Gene 11459 MouseEntrez Gene 29437 RatEntrez Gene 58 Human P68133

Background: The product encoded by this gene belongs to the actin family of proteins, which are highly conserved proteins that play a role in cell motility, structure and integrity. Alpha, beta and gamma actin isoforms have been identified, with alpha actins being a major constituent of the contractile apparatus, while beta and gamma actins are involved in the regulation of cell motility. This actin is an alpha actin that is found in skeletal muscle. Mutations in this gene cause nemaline myopathy type 3, congenital myopathy with excess of thin myofilaments, congenital myopathy with cores, and congenital myopathy with fiber-type disproportion, diseases that lead to muscle fiber defects. [provided by RefSeq]



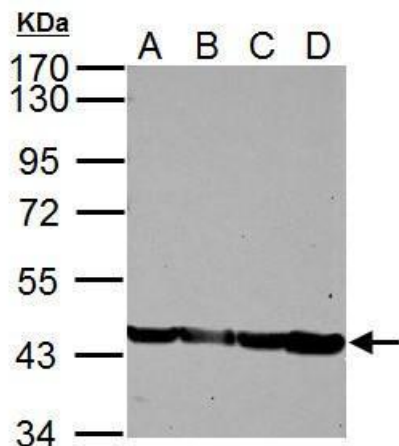
[View online »](#)

Synonyms: ACTA; ASMA; CFTD; CFTD1; CFTDM; MPFD; NEM1; NEM2; NEM3; SHPM

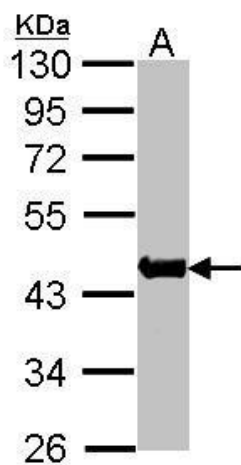
Note: Seq homology of immunogen across species: Rat (100%), Pig (100%), Chicken (100%), Bovine (100%)

Protein Families: Stem cell - Pluripotency

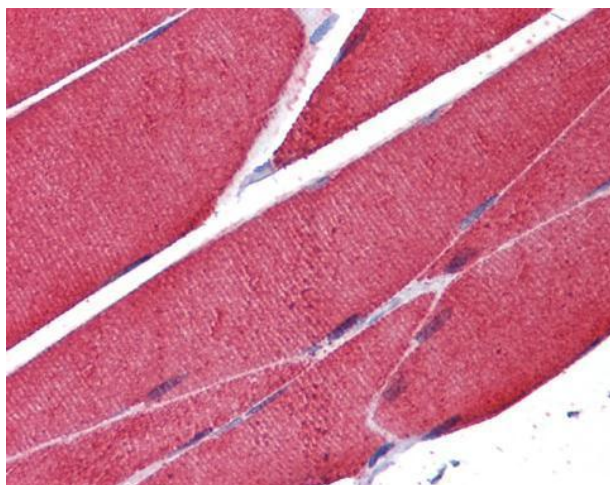
Product images:



Sample (30 ug of whole cell lysate). A: NIH-3T3. B: JC. C: BCL-1. D: C2C12. 10% SDS PAGE. TA308837 diluted at 1:5000.



Sample (30 ug of whole cell lysate). A:Raji. 10% SDS PAGE. TA308837 diluted at 1:1000



Immunohistochemical analysis of paraffin-embedded Skeletal Muscle, using alpha Actin (skeletal muscle) (TA308837) antibody (10 ug/ml).