

Product datasheet for **TA308768**

Ubiquilin (UBQLN1) Rabbit Polyclonal Antibody

Product data:

Product Type:	Primary Antibodies
Applications:	IF, WB
Recommended Dilution:	ICC/IF:1:100-1:1000; WB:1:500-1:3000
Reactivity:	Human (Predicted: Mouse, Rat, Bovine)
Host:	Rabbit
Isotype:	IgG
Clonality:	Polyclonal
Immunogen:	Recombinant fragment corresponding to a region within amino acids 64 and 345 of Ubiquilin-1 (Uniprot ID#Q9UMX0)
Formulation:	0.1M Tris, 0.1M Glycine, 10% Glycerol (pH7). 0.01% Thimerosal was added as a preservative.
Concentration:	lot specific
Purification:	Purified by antigen-affinity chromatography.
Conjugation:	Unconjugated
Storage:	Store at -20°C as received.
Stability:	Stable for 12 months from date of receipt.
Predicted Protein Size:	63 kDa
Gene Name:	ubiquilin 1
Database Link:	NP_444295 Entrez Gene 56085 Mouse Entrez Gene 114590 Rat Entrez Gene 29979 Human Q9UMX0

Background: This gene encodes an ubiquitin-like protein (ubiquilin) that shares a high degree of similarity with related products in yeast, rat and frog. Ubiquilins contain an N-terminal ubiquitin-like domain and a C-terminal ubiquitin-associated domain. They physically associate with both proteasomes and ubiquitin ligases, and thus are thought to functionally link the ubiquitination machinery to the proteasome to affect in vivo protein degradation. This ubiquilin has also been shown to modulate accumulation of presenilin proteins, and it is found in lesions associated with Alzheimer's and Parkinson's disease. Two transcript variants encoding different isoforms have been found for this gene. [provided by RefSeq]



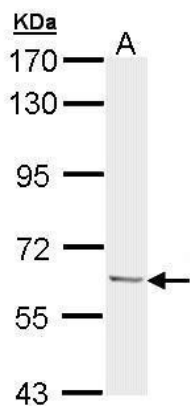
[View online »](#)

Synonyms: DA41; DSK2; PLIC-1; UBQN; XDRP1

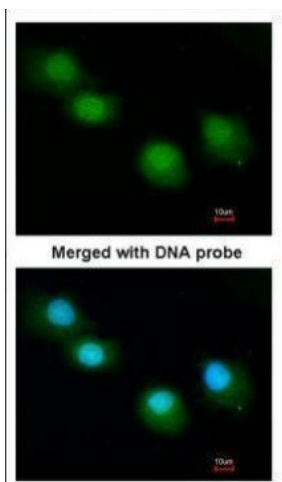
Note: Seq homology of immunogen across species: Mouse (90%), Rat (90%), Bovine (95%)

Protein Families: Druggable Genome

Product images:



Sample (30 ug of whole cell lysate). A: 293T. 7.5% SDS PAGE. TA308768 diluted at 1:1000.



Immunofluorescence analysis of paraformaldehyde-fixed A549, using Ubiquilin-1 (TA308768) antibody at 1:200 dilution.