

Product datasheet for **TA308748**

Cullin 7 (CUL7) Rabbit Polyclonal Antibody

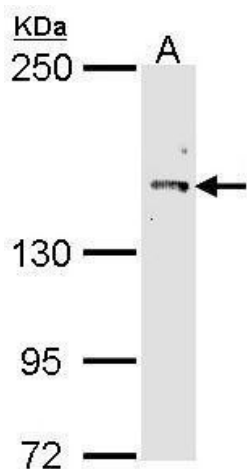
Product data:

Product Type:	Primary Antibodies
Applications:	IF, IHC, WB
Recommended Dilution:	ICC/IF:1:100-1:1000; IHC:1:100-1:1000; WB:1:500-1:3000
Reactivity:	Human
Host:	Rabbit
Isotype:	IgG
Clonality:	Polyclonal
Immunogen:	Recombinant fragment corresponding to a region within amino acids 1370 and 1698 of Cullin 7 (Uniprot ID#Q14999)
Formulation:	0.1M Tris, 0.1M Glycine, 20% Glycerol (pH7). 0.01% Thimerosal was added as a preservative.
Concentration:	lot specific
Purification:	Purified by antigen-affinity chromatography.
Conjugation:	Unconjugated
Storage:	Store at -20°C as received.
Stability:	Stable for 12 months from date of receipt.
Predicted Protein Size:	191 kDa
Gene Name:	cullin 7
Database Link:	NP_055595 Entrez Gene 9820 Human Q14999
Synonyms:	3M1; CUL-7; dj20C7.5; KIAA0076
Protein Pathways:	Ubiquitin mediated proteolysis

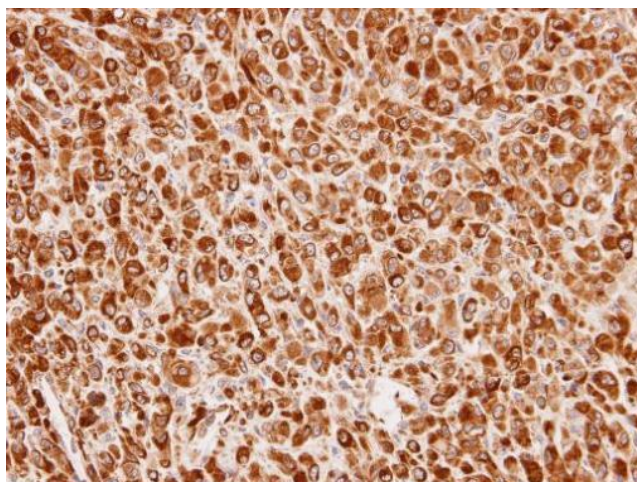


[View online »](#)

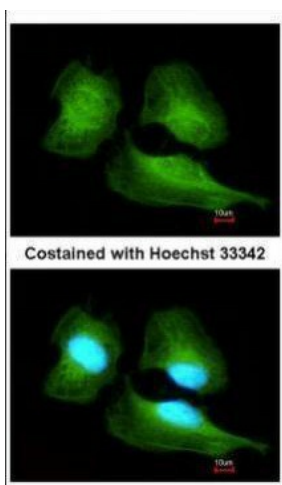
Product images:



Sample (30 ug of whole cell lysate). A: Molt-4.
7.5% SDS PAGE. TA308748 diluted at 1:1000.



Immunohistochemical analysis of paraffin-
embedded U87 xenograft, using Cullin 7
(TA308748) antibody at 1:100 dilution.



Immunofluorescence analysis of methanol-fixed HeLa, using Cullin 7 (TA308748) antibody at 1:200 dilution.