

Product datasheet for **TA308686**

SDHB Rabbit Polyclonal Antibody

Product data:

Product Type:	Primary Antibodies
Applications:	IF, WB
Recommended Dilution:	ICC/IF:1:100-1:1000; WB:1:500-1:3000
Reactivity:	Human (Predicted: Rat, Pig, Bovine, Rhesus Monkey)
Host:	Rabbit
Isotype:	IgG
Clonality:	Polyclonal
Immunogen:	Synthetic peptide corresponding to a region within amino acids 221 and 280 of SDHB (Uniprot ID#P21912)
Formulation:	1XPBS, 40% Glycerol (pH7). 0.01% Thimerosal was added as a preservative.
Concentration:	lot specific
Purification:	Purified by antigen-affinity chromatography.
Conjugation:	Unconjugated
Storage:	Store at -20°C as received.
Stability:	Stable for 12 months from date of receipt.
Predicted Protein Size:	32 kDa
Gene Name:	succinate dehydrogenase complex iron sulfur subunit B
Database Link:	NP_002991 Entrez Gene 298596 Rat Entrez Gene 6390 Human P21912
Background:	Complex II of the respiratory chain, which is specifically involved in the oxidation of succinate, carries electrons from FADH to CoQ. The complex is composed of four nuclear-encoded subunits and is localized in the mitochondrial inner membrane. The iron-sulfur subunit is highly conserved and contains three cysteine-rich clusters which may comprise the iron-sulfur centers of the enzyme. Sporadic and familial mutations in this gene result in paragangliomas and pheochromocytoma, and support a link between mitochondrial dysfunction and tumorigenesis. [provided by RefSeq]
Synonyms:	CWS2; IP; PGL4; SDH; SDH1; SDH2; SDHIP



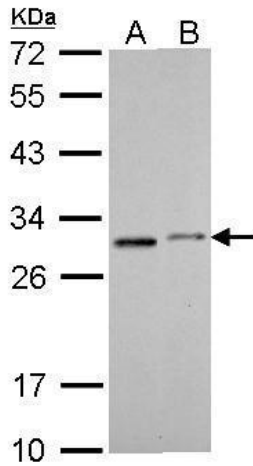
[View online »](#)

Note: Seq homology of immunogen across species: Rat (87%), Pig (100%), Rhesus Monkey (100%), Bovine (89%)

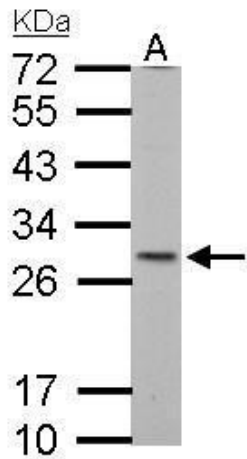
Protein Families: Druggable Genome

Protein Pathways: Alzheimer's disease, Citrate cycle (TCA cycle), Huntington's disease, Metabolic pathways, Oxidative phosphorylation, Parkinson's disease

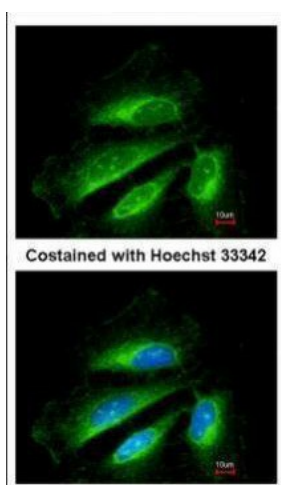
Product images:



SDHB antibody [C2C3], C-term detects SDHB protein by Western blot analysis. A. 30 ug THP-1 whole cell lysate/extract. B. 30 ug NCI-H929 whole cell lysate/extract. 12 % SDS-PAGE. SDHB antibody [C2C3], C-term (TA308686) dilution: 1:1000



SDHB antibody [C2C3], C-term detects SDHB protein by Western blot analysis. A. 30 ug Neuro2A whole cell lysate/extract. 12 % SDS-PAGE. SDHB antibody [C2C3], C-term (TA308686) dilution: 1:1000



Immunofluorescence analysis of methanol-fixed HeLa, using SDHB (TA308686) antibody at 1:200 dilution.