

## Product datasheet for **TA308568**

### DCXR Rabbit Polyclonal Antibody

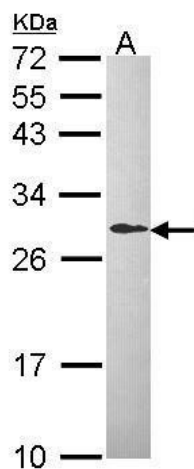
#### Product data:

Product Type:	Primary Antibodies
Applications:	WB
Recommended Dilution:	WB:1:500-1:3000
Reactivity:	Human (Predicted: Mouse, Guinea Pig)
Host:	Rabbit
Isotype:	IgG
Clonality:	Polyclonal
Immunogen:	Synthetic peptide corresponding to a region within amino acids 182 and 244 of DCXR (Uniprot ID#Q7Z4W1)
Formulation:	1XPBS, 40% Glycerol (pH7). 0.01% Thimerosal was added as a preservative.
Concentration:	lot specific
Purification:	Purified by antigen-affinity chromatography.
Conjugation:	Unconjugated
Storage:	Store at -20°C as received.
Stability:	Stable for 12 months from date of receipt.
Predicted Protein Size:	26 kDa
Gene Name:	dicarbonyl/L-xylulose reductase
Database Link:	<a href="#">NP_057370</a> <a href="#">Entrez Gene 67880 Mouse</a> <a href="#">Entrez Gene 51181 Human</a> <a href="#">Q7Z4W1</a>
Background:	DCXR is an enzyme that has both diacetyl reductase (EC 1.1.1.5) and L-xylulose reductase (EC 1.1.1.10) activities (Nakagawa et al., 2002 [PubMed 11882650]). [supplied by OMIM]
Synonyms:	DCR; HCR2; HCRII; KIDCR; P34H; PNTSU; SDR20C1; XR
Note:	Seq homology of immunogen across species: Mouse (83%), Guinea pig (83%)
Protein Families:	Druggable Genome
Protein Pathways:	Metabolic pathways, Pentose and glucuronate interconversions



[View online »](#)

## Product images:



Sample (30 ug of whole cell lysate). A: Hep G2.  
12% SDS PAGE. TA308568 diluted at 1:1000.