

## Product datasheet for **TA308519**

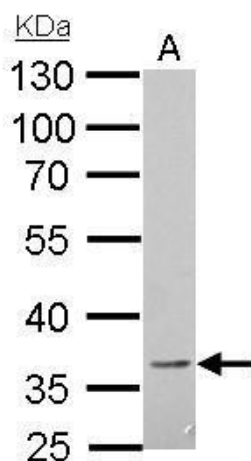
### CD272 (BTLA) Rabbit Polyclonal Antibody

#### Product data:

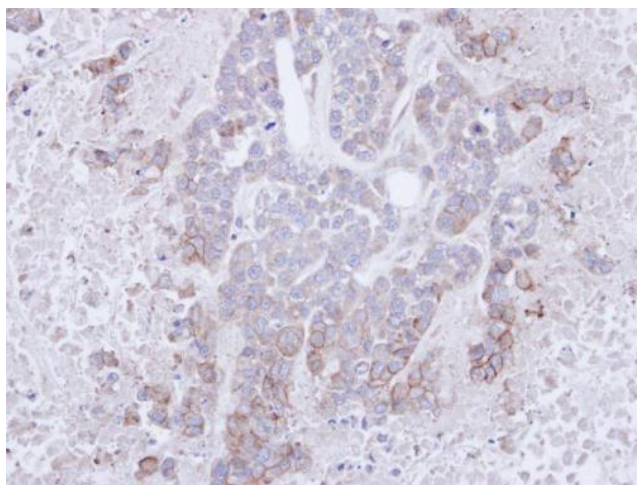
Product Type:	Primary Antibodies
Applications:	IHC, WB
Recommended Dilution:	IHC:1:100-1:1000; WB:1:500-1:3000
Reactivity:	Human
Host:	Rabbit
Isotype:	IgG
Clonality:	Polyclonal
Immunogen:	Recombinant protein fragment contain a sequence corresponding to a region within amino acids 1 and 164 of CD272
Formulation:	0.1M Tris, 0.1M Glycine, 10% Glycerol (pH7). 0.01% Thimerosal was added as a preservative.
Concentration:	lot specific
Purification:	Purified by antigen-affinity chromatography.
Conjugation:	Unconjugated
Storage:	Store at -20°C as received.
Stability:	Stable for 12 months from date of receipt.
Predicted Protein Size:	27 kDa
Gene Name:	B and T lymphocyte associated
Database Link:	<a href="#">NP_001078826</a> <a href="#">Entrez Gene 151888 Human</a> <a href="#">Q7Z6A9</a>
Background:	BTLA expression is induced during activation of T cells, and BTLA remains expressed on Th1 cells but not Th2 cells. Like PD1 (MIM 600244) and CTLA4 (MIM 123890), BTLA interacts with a B7 homolog, B7H4. [supplied by OMIM]
Synonyms:	BTLA1; CD272
Protein Families:	Transmembrane



[View online »](#)

**Product images:**

CD272 antibody detects BTLA protein by Western blot analysis. A. 30 ug A375 whole cell lysate/extract. 10 % SDS-PAGE. CD272 antibody (TA308519) dilution: 1:1000



Immunohistochemical analysis of paraffin-embedded MDAMB468 xenograft, using CD272 (TA308519) antibody at 1:100 dilution.