

## Product datasheet for **TA308495**

### Argininosuccinate Lyase (ASL) Rabbit Polyclonal Antibody

#### Product data:

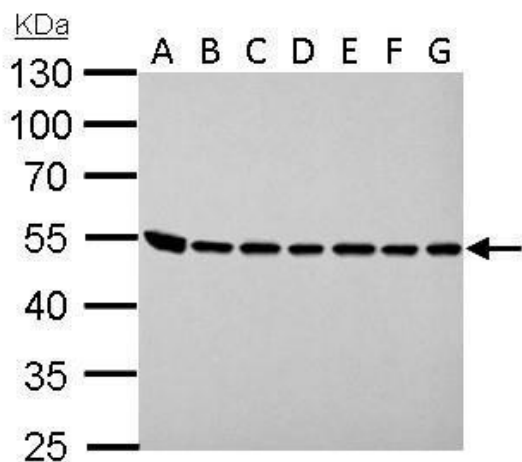
Product Type:	Primary Antibodies
Applications:	IF, IHC, WB
Recommended Dilution:	ICC/IF:1:100-1:1000; IHC:1:100-1:1000; WB:1:500-1:3000
Reactivity:	Human
Host:	Rabbit
Isotype:	IgG
Clonality:	Polyclonal
Immunogen:	Recombinant fragment corresponding to a region within amino acids 13 and 261 of ASL (Uniprot ID#P04424)
Formulation:	1XPBS, 20% Glycerol (pH7). 0.025% ProClin 300 was added as a preservative.
Concentration:	lot specific
Purification:	Purified by antigen-affinity chromatography.
Conjugation:	Unconjugated
Storage:	Store at -20°C as received.
Stability:	Stable for 12 months from date of receipt.
Predicted Protein Size:	52 kDa
Gene Name:	argininosuccinate lyase
Database Link:	<a href="#">NP_000039</a> <a href="#">Entrez Gene 435 Human P04424</a>
Background:	This gene encodes a member of the lyase 1 family. The encoded protein forms a cytosolic homotetramer and primarily catalyzes the reversible hydrolytic cleavage of argininosuccinate into arginine and fumarate, an essential step in the liver in detoxifying ammonia via the urea cycle. Mutations in this gene result in the autosomal recessive disorder argininosuccinic aciduria, or argininosuccinic acid lyase deficiency. A nontranscribed pseudogene is also located on the long arm of chromosome 22. Alternatively spliced transcript variants encoding different isoforms have been described. [provided by RefSeq]
Synonyms:	ASAL



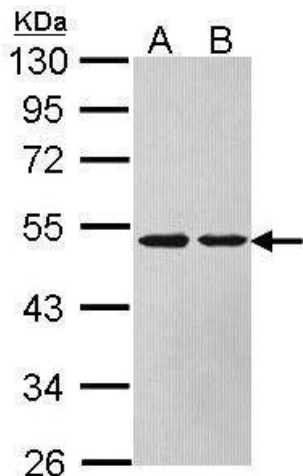
[View online »](#)

**Protein Pathways:** Alanine, aspartate and glutamate metabolism, Arginine and proline metabolism, Metabolic pathways

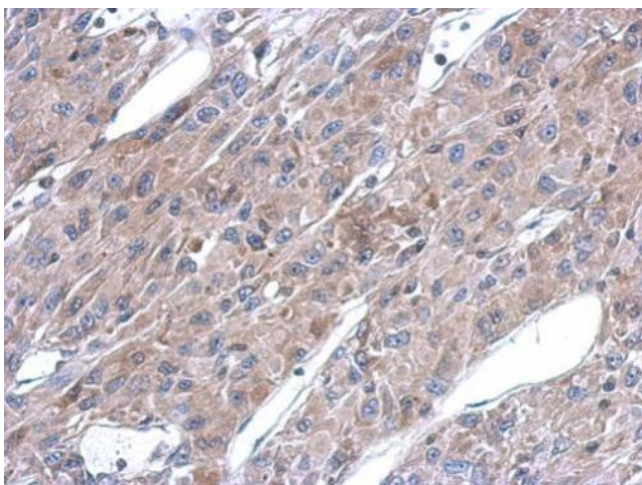
**Product images:**



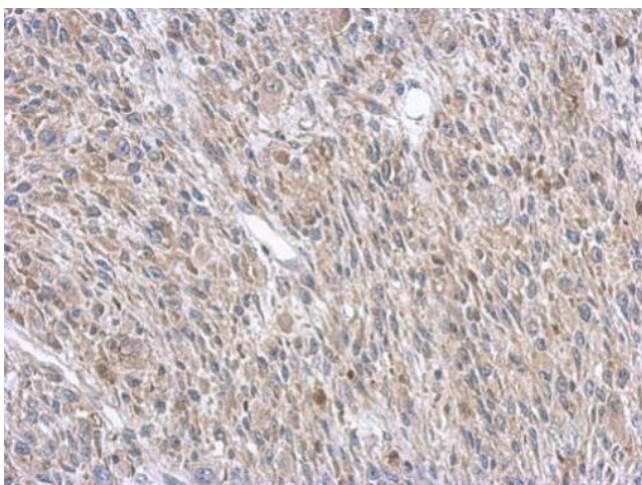
ASL antibody detects ASL protein by Western blot analysis. A. 30 ug Neuro2A whole lysate/extract. B. 30 ug GL261 whole cell lysate/extract. C. 30 ug C8D30 whole cell lysate/extract. D. 30 ug NIH-3T3 whole cell lysate/extract. E. 30 ug BCL-1 whole cell lys



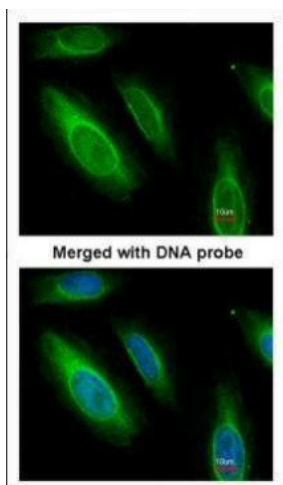
Sample (30 ug of whole cell lysate). A: HeLa. B: Hep G2. 10% SDS PAGE. TA308495 diluted at 1:1000.



Immunohistochemical analysis of paraffin-embedded U87 xenograft, using ASL (TA308495) antibody at 1:500 dilution.



Immunohistochemical analysis of paraffin-embedded C2C12 xenograft, using ASL (TA308495) antibody at 1:500 dilution.



Immunofluorescence analysis of paraformaldehyde-fixed HeLa, using Argininosuccinate Lyase (TA308495) antibody at 1:200 dilution.