

Product datasheet for **TA308481**

PSMA3 Rabbit Polyclonal Antibody

Product data:

Product Type:	Primary Antibodies
Applications:	IHC, WB
Recommended Dilution:	IHC:1:100-1:1000; WB:1:500-1:3000
Reactivity:	Human
Host:	Rabbit
Isotype:	IgG
Clonality:	Polyclonal
Immunogen:	Recombinant protein fragment contain a sequence corresponding to a region within amino acids 1 and 137 of Proteasome 20S alpha 3
Formulation:	0.1M Tris, 0.1M Glycine, 20% Glycerol (pH7). 0.01% Thimerosal was added as a preservative.
Concentration:	lot specific
Purification:	Purified by antigen-affinity chromatography.
Conjugation:	Unconjugated
Storage:	Store at -20°C as received.
Stability:	Stable for 12 months from date of receipt.
Predicted Protein Size:	28 kDa
Gene Name:	proteasome subunit alpha 3
Database Link:	NP_002779 Entrez Gene 5684 Human P25788

[View online »](#)

Background:

The proteasome is a multicatalytic proteinase complex with a highly ordered ring-shaped 20S core structure. The core structure is composed of 4 rings of 28 non-identical subunits; 2 rings are composed of 7 alpha subunits and 2 rings are composed of 7 beta subunits. Proteasomes are distributed throughout eukaryotic cells at a high concentration and cleave peptides in an ATP/ubiquitin-dependent process in a non-lysosomal pathway. An essential function of a modified proteasome, the immunoproteasome, is the processing of class I MHC peptides. This gene encodes a member of the peptidase T1A family, that is a 20S core alpha subunit. Two alternative transcripts encoding different isoforms have been identified. [provided by RefSeq]

Synonyms:

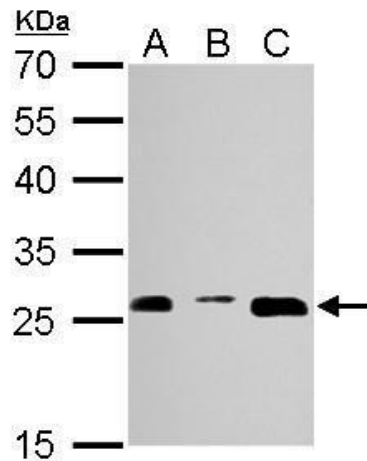
HC8; PSC3

Protein Families:

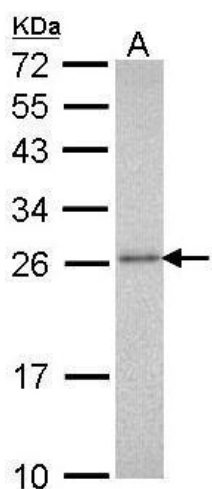
Druggable Genome, Protease, Stem cell - Pluripotency

Protein Pathways:

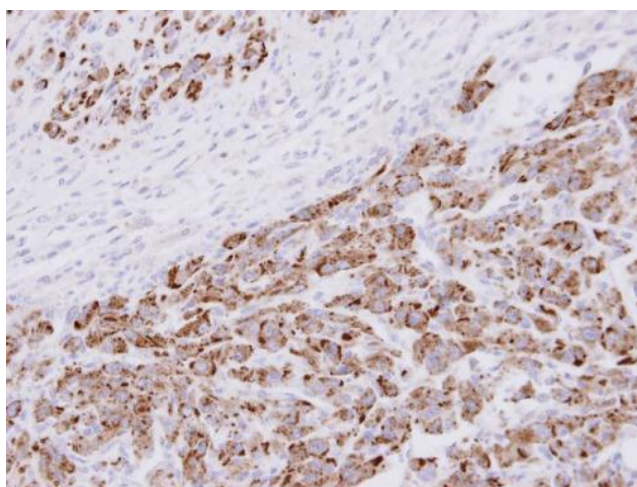
Proteasome

Product images:


Proteasome 20S alpha 3 antibody detects PSMA3 protein by Western blot analysis. A. 30 ug NIH-3T3 whole cell lysate/extract. B. 30 ug JC whole cell lysate/extract. C. 30 ug BCL-1 whole cell lysate/extract. 12 % SDS-PAGE. Proteasome 20S alpha 3 antibody (TA)



Sample (30 ug of whole cell lysate). A: Molt-4.
12% SDS PAGE. TA308481 diluted at 1:1000.



Immunohistochemical analysis of paraffin-
embedded U87 xenograft, using 20S Proteasome
alpha3 (TA308481) antibody at 1:100 dilution.