

Product datasheet for **TA308457**

Cellular Apoptosis Susceptibility (CSE1L) Rabbit Polyclonal Antibody

Product data:

Product Type:	Primary Antibodies
Applications:	IF, IHC, WB
Recommended Dilution:	ICC/IF:1:100-1:1000; IHC:1:100-1:1000; WB:1:500-1:3000
Reactivity:	Human (Predicted: Pig, Bovine, Rhesus Monkey)
Host:	Rabbit
Isotype:	IgG
Clonality:	Polyclonal
Immunogen:	Recombinant fragment corresponding to a region within amino acids 222 and 469 of CSE1L (Uniprot ID#P55060)
Formulation:	1XPBS, 20% Glycerol (pH7). 0.025% ProClin 300 was added as a preservative.
Concentration:	lot specific
Purification:	Purified by antigen-affinity chromatography.
Conjugation:	Unconjugated
Storage:	Store at -20°C as received.
Stability:	Stable for 12 months from date of receipt.
Predicted Protein Size:	110 kDa
Gene Name:	chromosome segregation 1 like
Database Link:	NP_001307 Entrez Gene 1434 Human P55060

Background: Proteins that carry a nuclear localization signal (NLS) are transported into the nucleus by the importin-alpha/beta heterodimer. Importin-alpha binds the NLS, while importin-beta mediates translocation through the nuclear pore complex. After translocation, RanGTP binds importin-beta and displaces importin-alpha. Importin-alpha must then be returned to the cytoplasm, leaving the NLS protein behind. The protein encoded by this gene binds strongly to NLS-free importin-alpha, and this binding is released in the cytoplasm by the combined action of RANBP1 and RANGAP1. In addition, the encoded protein may play a role both in apoptosis and in cell proliferation. [provided by RefSeq]



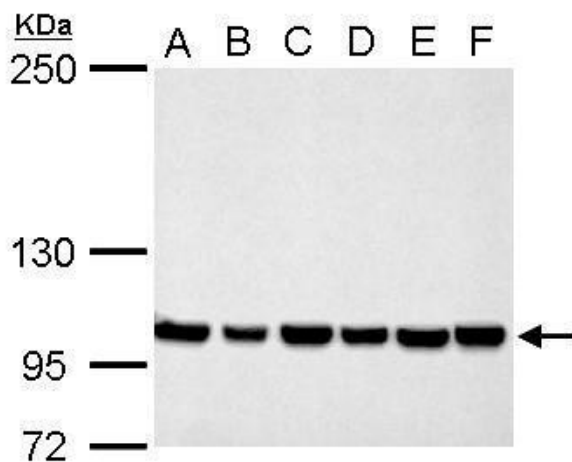
[View online »](#)

Synonyms: CAS; CSE1; XPO2

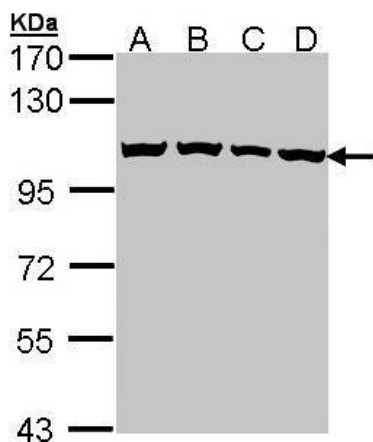
Note: Seq homology of immunogen across species: Pig (100%), Rhesus Monkey (100%), Bovine (100%)

Protein Families: Druggable Genome

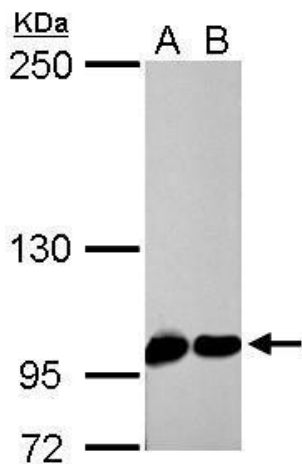
Product images:



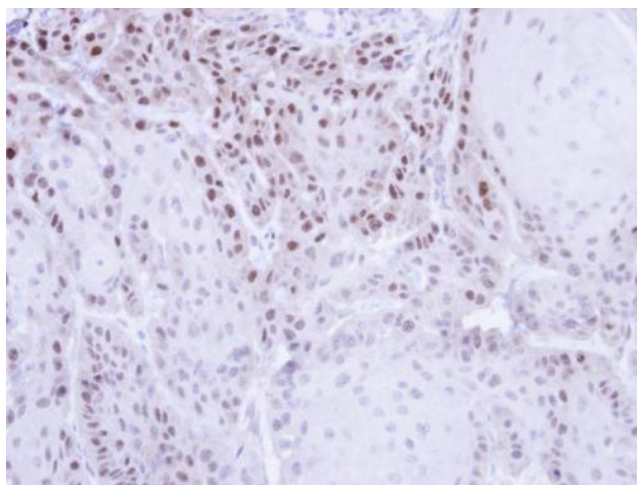
CSE1L antibody detects CSE1L protein by Western blot analysis. A. 30 ug Neuro2A whole cell lysate/extract. B. 30 ug GL261 whole cell lysate/extract. C. 30 ug C8D30 whole cell lysate/extract. D. 30 ug NIH-3T3 whole cell lysate/extract. E. 30 ug BCL-1 whole



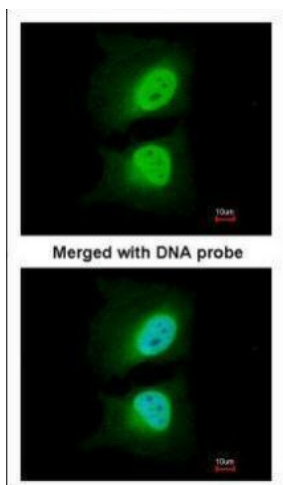
Sample (30 ug of whole cell lysate). A: 293T. B: A431. C: H1299. D: HeLa. 7.5% SDS PAGE. TA308457 diluted at 1:1000.



CSE1L antibody detects CSE1L protein by Western blot analysis. A. 30 ug PC-12 whole cell lysate/extract. B. 30 ug Rat2 whole cell lysate/extract. 5 % SDS-PAGE. CSE1L antibody (TA308457) dilution: 1:1000



Immunohistochemical analysis of paraffin-embedded Cal27 Xenograft, using CSE1L (TA308457) antibody at 1:500 dilution.



Immunofluorescence analysis of paraformaldehyde-fixed HeLa, using CSE1L (TA308457) antibody at 1:200 dilution.