

## Product datasheet for **TA308422**

### NAT1 Rabbit Polyclonal Antibody

#### Product data:

Product Type:	Primary Antibodies
Applications:	IHC, WB
Recommended Dilution:	IHC:1:100-1:1000; WB:1:500-1:3000
Reactivity:	Human (Predicted: Bovine)
Host:	Rabbit
Isotype:	IgG
Clonality:	Polyclonal
Immunogen:	Recombinant fragment corresponding to a region within amino acids 1 and 187 of NAT1 (Uniprot ID#P18440)
Formulation:	0.1M Tris, 0.1M Glycine, 20% Glycerol (pH7). 0.01% Thimerosal was added as a preservative.
Concentration:	lot specific
Purification:	Purified by antigen-affinity chromatography.
Conjugation:	Unconjugated
Storage:	Store at -20°C as received.
Stability:	Stable for 12 months from date of receipt.
Predicted Protein Size:	34 kDa
Gene Name:	N-acetyltransferase 1 (arylamine N-acetyltransferase)
Database Link:	<a href="#">NP_000653</a> <a href="#">Entrez Gene 9 Human P18440</a>
Background:	This gene is one of two arylamine N-acetyltransferase (NAT) genes in the human genome, and is orthologous to the mouse and rat Nat2 genes. The enzyme encoded by this gene catalyzes the transfer of an acetyl group from acetyl-CoA to various arylamine and hydrazine substrates. This enzyme helps metabolize drugs and other xenobiotics, and functions in folate catabolism. Multiple transcript variants encoding different isoforms have been found for this gene. [provided by RefSeq]
Synonyms:	AAC1; MNAT; NAT-1; NATI

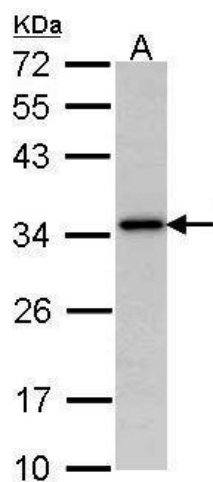


[View online »](#)

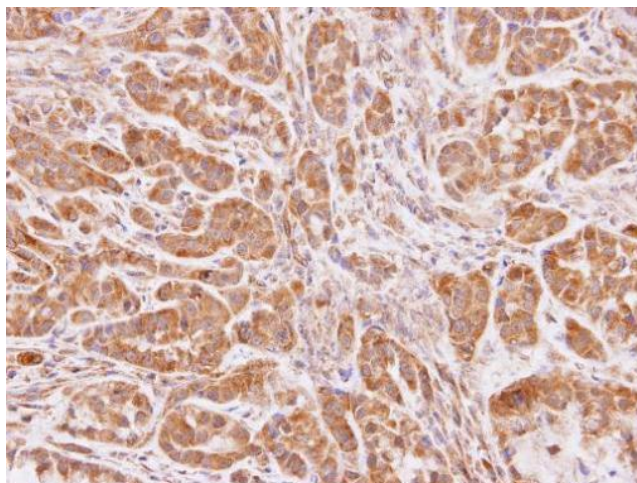
**Note:** Seq homology of immunogen across species: Bovine (83%)

**Protein Pathways:** Caffeine metabolism, Drug metabolism - other enzymes, Metabolic pathways

**Product images:**



Sample (30 ug of whole cell lysate). A: HeLa. 12% SDS PAGE. TA308422 diluted at 1:1000.



Immunohistochemical analysis of paraffin-embedded A549 xenograft, using NAT1 (TA308422) antibody at 1:100 dilution.