

Product datasheet for **TA308348**

GALR2 Rabbit Polyclonal Antibody

Product data:

Product Type:	Primary Antibodies
Applications:	IHC, WB
Recommended Dilution:	IHC:1:100-1:1000; WB:1:500-1:3000
Reactivity:	Human (Predicted: Bovine, Chicken, Mouse)
Host:	Rabbit
Isotype:	IgG
Clonality:	Polyclonal
Immunogen:	Synthetic peptide corresponding to a region within amino acids 243 and 336 of Galanin Receptor 2 (Uniprot ID#O43603)
Formulation:	1XPBS, 50% Glycerol (pH7). 0.01% Thimerosal was added as a preservative.
Concentration:	lot specific
Purification:	Purified by antigen-affinity chromatography.
Conjugation:	Unconjugated
Storage:	Store at -20°C as received.
Stability:	Stable for 12 months from date of receipt.
Predicted Protein Size:	42 kDa
Gene Name:	galanin receptor 2
Database Link:	NP_003848 Entrez Gene 14428 Mouse Entrez Gene 8811 Human O43603



[View online »](#)

Background:

Galanin is an important neuromodulator present in the brain, gastrointestinal system, and hypothalamopituitary axis. It is a 30-amino acid non-C-terminally amidated peptide that potently stimulates growth hormone secretion, inhibits cardiac vagal slowing of heart rate, abolishes sinus arrhythmia, and inhibits postprandial gastrointestinal motility. The actions of galanin are mediated through interaction with specific membrane receptors that are members of the 7-transmembrane family of G protein-coupled receptors. GALR2 interacts with the N-terminal residues of the galanin peptide. The primary signaling mechanism for GALR2 is through the phospholipase C/protein kinase C pathway (via Gq), in contrast to GALR1, which communicates its intracellular signal by inhibition of adenylyl cyclase through Gi. However, it has been demonstrated that GALR2 couples efficiently to both the Gq and Gi proteins to simultaneously activate 2 independent signal transduction pathways. [provided by RefSeq]

Synonyms:

GAL2-R; GALNR2; GALR-2

Note:

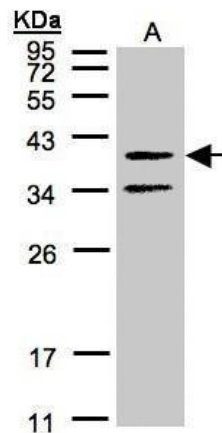
Seq homology of immunogen across species: Mouse (92%), Chicken (86%), Bovine (93%)

Protein Families:

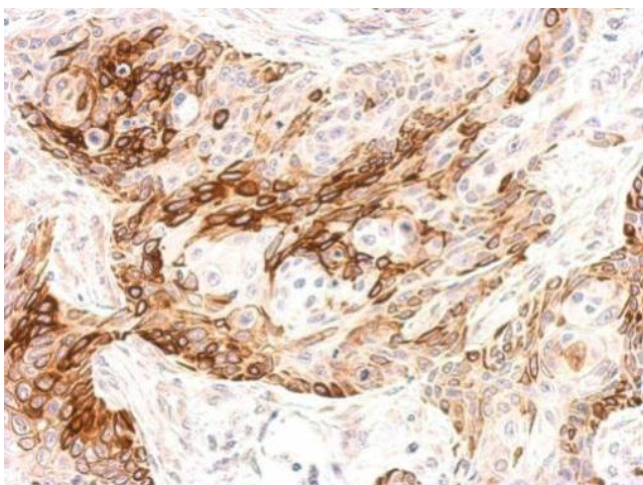
Druggable Genome, Transmembrane

Protein Pathways:

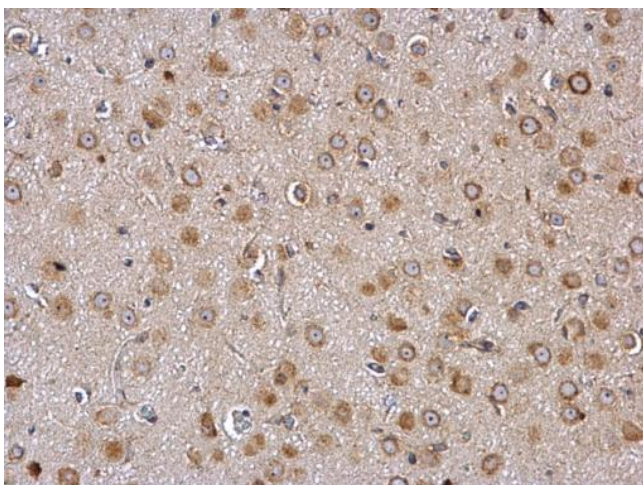
Neuroactive ligand-receptor interaction

Product images:

Sample (30 ug of whole cell lysate). A:A431. 12% SDS PAGE. TA308348 diluted at 1:500



Galanin Receptor 2 antibody detects GALR2 protein at membrane on Cal27 xenograft by immunohistochemical analysis. Sample: Paraffin-embedded Cal27 xenograft. Galanin Receptor 2 antibody (TA308348) dilution: 1:500.



Galanin Receptor 2 antibody detects Galanin Receptor 2 protein at membrane and cytosol on rat fore brain by immunohistochemical analysis. Sample: Paraffin-embedded rat fore brain. Galanin Receptor 2 antibody (TA308348) dilution: 1:500.