

Product datasheet for **TA308298**

TCP1 epsilon (CCT5) Rabbit Polyclonal Antibody

Product data:

Product Type:	Primary Antibodies
Applications:	IF, IHC, WB
Recommended Dilution:	ICC/IF:1:100-1:1000; IHC:1:100-1:1000; WB:1:500-1:10000
Reactivity:	Human, Mouse (Predicted: Rhesus Monkey)
Host:	Rabbit
Isotype:	IgG
Clonality:	Polyclonal
Immunogen:	Recombinant fragment corresponding to a region within amino acids 89 and 338 of TCP1 epsilon (Uniprot ID#P48643)
Formulation:	0.1M Tris, 0.1M Glycine, 10% Glycerol (pH7). 0.01% Thimerosal was added as a preservative.
Concentration:	lot specific
Purification:	Purified by antigen-affinity chromatography.
Conjugation:	Unconjugated
Storage:	Store at -20°C as received.
Stability:	Stable for 12 months from date of receipt.
Predicted Protein Size:	60 kDa
Gene Name:	chaperonin containing TCP1 subunit 5
Database Link:	NP_036205 Entrez Gene 12465 Mouse Entrez Gene 22948 Human P48643
Background:	This gene encodes a molecular chaperone that is member of the chaperonin containing TCP1 complex (CCT), also known as the TCP1 ring complex (TRiC). This complex consists of two identical stacked rings, each containing eight different proteins. Unfolded polypeptides enter the central cavity of the complex and are folded in an ATP-dependent manner. The complex folds various proteins, including actin and tubulin. Alternate transcriptional splice variants of this gene have been observed but have not been thoroughly characterized. [provided by RefSeq]
Synonyms:	CCT-epsilon; CCTE; HEL-S-69; PNAS-102; TCP-1-epsilon

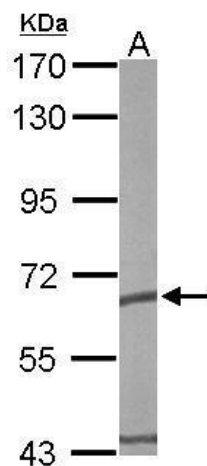


[View online »](#)

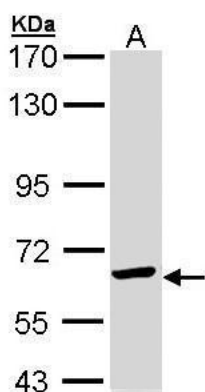
Note: Seq homology of immunogen across species: Rhesus Monkey (100%)

Protein Families: Druggable Genome

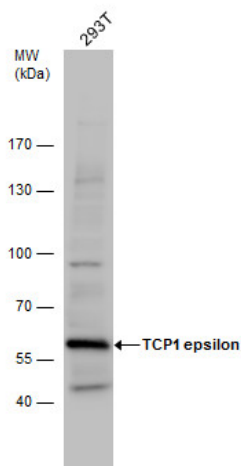
Product images:



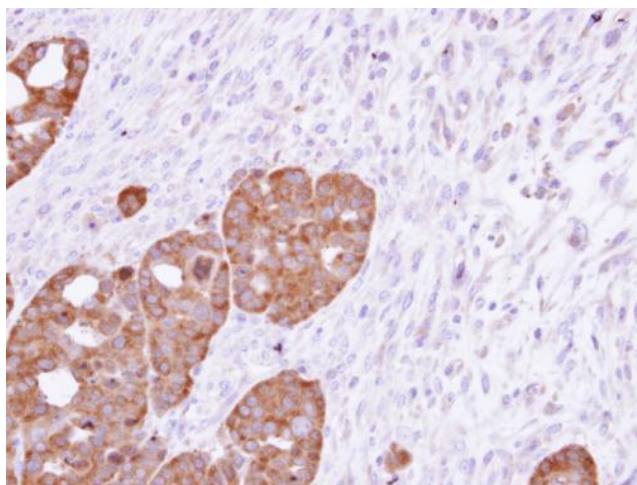
Sample (50 ug of whole cell lysate). A: mouse brain. 7.5% SDS PAGE. TA308298 diluted at 1:10000.



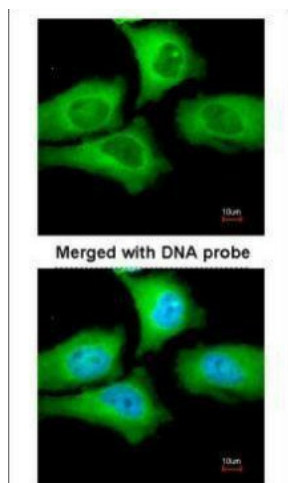
Sample (30 ug of whole cell lysate). A: Molt-4. 7.5% SDS PAGE. TA308298 diluted at 1:1000



TCP1 epsilon antibody detects TCP1 protein by western blot analysis. Whole cell extracts (30 ug) was separated by 7.5 % SDS-PAGE, and blotted with TCP1 epsilon antibody (TA308298) diluted by 1:1000



Immunohistochemical analysis of paraffin-embedded NCIN87 xenograft, using TCP-1 epsilon (TA308298) antibody at 1:500 dilution.



Immunofluorescence analysis of paraformaldehyde-fixed HeLa, using TCP-1 epsilon (TA308298) antibody at 1:200 dilution.