

Product datasheet for **TA308166**

PRPSAP2 Rabbit Polyclonal Antibody

Product data:

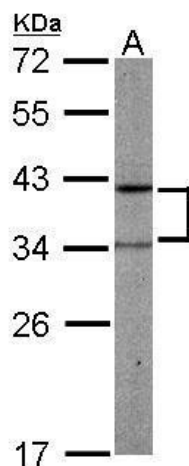
Product Type:	Primary Antibodies
Applications:	IF, IHC, WB
Recommended Dilution:	ICC/IF:1:100-1:1000; IHC:1:100-1:1000; WB:1:500-1:3000
Reactivity:	Human, Mouse (Predicted: Chicken, Rat, Bovine)
Host:	Rabbit
Isotype:	IgG
Clonality:	Polyclonal
Immunogen:	Recombinant fragment corresponding to a region within amino acids 1 and 369 of PRPSAP2 (Uniprot ID#O60256)
Formulation:	0.1M Tris, 0.1M Glycine, 10% Glycerol (pH7). 0.01% Thimerosal was added as a preservative.
Concentration:	lot specific
Purification:	Purified by antigen-affinity chromatography.
Conjugation:	Unconjugated
Storage:	Store at -20°C as received.
Stability:	Stable for 12 months from date of receipt.
Predicted Protein Size:	41 kDa
Gene Name:	phosphoribosyl pyrophosphate synthetase associated protein 2
Database Link:	NP_002758 Entrez Gene 117272 RatEntrez Gene 212627 MouseEntrez Gene 5636 Human O60256
Background:	The enzyme phosphoribosylpyrophosphate synthetase (PRS) catalyzes the formation of phosphoribosylpyrophosphate which is a substrate for synthesis of purine and pyrimidine nucleotides, histidine, tryptophan and NAD. PRS exists as a complex with two catalytic subunits and two associated subunits. This gene encodes a non-catalytic associated subunit of PRS. [provided by RefSeq]
Synonyms:	PAP41
Note:	Seq homology of immunogen across species: Chicken (97%), Rat (99%), Bovine (97%)



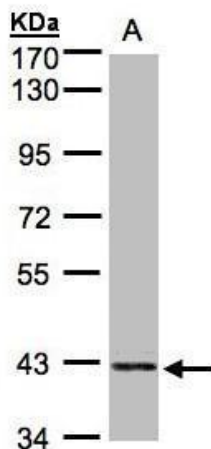
[View online »](#)

Protein Families: Druggable Genome

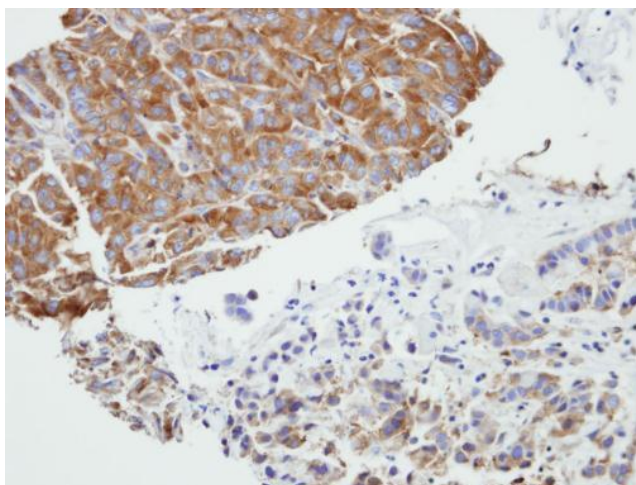
Product images:



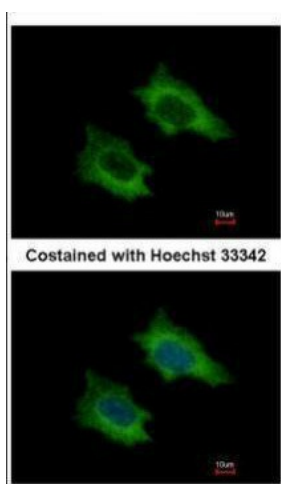
Sample (50 ug of whole cell lysate). A: mouse liver. 12% SDS PAGE. TA308166 diluted at 1:1000.



Sample (30ug whole cell lysate). A:HeLa S3. 7.5% SDS PAGE. TA308166 diluted at 1:1000



Immunohistochemical analysis of paraffin-embedded A549 xenograft, using PRPSAP2 (TA308166) antibody at 1:500 dilution.



Immunofluorescence analysis of methanol-fixed HeLa, using PRPSAP2 (TA308166) antibody at 1:500 dilution.