

Product datasheet for **TA308075**

ORC2 Rabbit Polyclonal Antibody

Product data:

Product Type:	Primary Antibodies
Applications:	IHC, WB
Recommended Dilution:	IHC:1:100-1:1000; WB:1:500-1:3000
Reactivity:	Human (Predicted: Mouse, Bovine)
Host:	Rabbit
Isotype:	IgG
Clonality:	Polyclonal
Immunogen:	Recombinant fragment corresponding to a region within amino acids 208 and 479 of ORC2 (Uniprot ID#Q13416)
Formulation:	1XPBS, 1% BSA, 20% Glycerol (pH7). 0.01% Thimerosal was added as a preservative.
Concentration:	lot specific
Purification:	Purified by antigen-affinity chromatography.
Conjugation:	Unconjugated
Storage:	Store at -20°C as received.
Stability:	Stable for 12 months from date of receipt.
Predicted Protein Size:	66 kDa
Gene Name:	origin recognition complex subunit 2
Database Link:	NP_006181 Entrez Gene 18393 Mouse Entrez Gene 4999 Human Q13416



[View online »](#)

Background:

The origin recognition complex (ORC) is a highly conserved six subunits protein complex essential for the initiation of the DNA replication in eukaryotic cells. Studies in yeast demonstrated that ORC binds specifically to origins of replication and serves as a platform for the assembly of additional initiation factors such as Cdc6 and Mcm proteins. The protein encoded by this gene is a subunit of the ORC complex. This protein forms a core complex with ORC3L, -4L, and -5L. It also interacts with CDC45L and MCM10, which are proteins known to be important for the initiation of DNA replication. This protein has been demonstrated to specifically associate with the origin of replication of Epstein-Barr virus in human cells, and is thought to be required for DNA replication from viral origin of replication. [provided by RefSeq]

Synonyms:

ORC2L

Note:

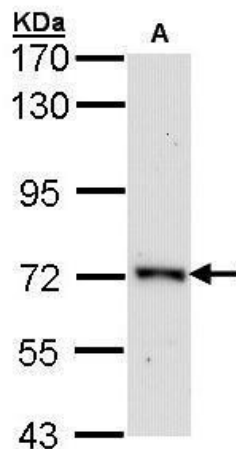
Seq homology of immunogen across species: Mouse (84%), Bovine (92%)

Protein Families:

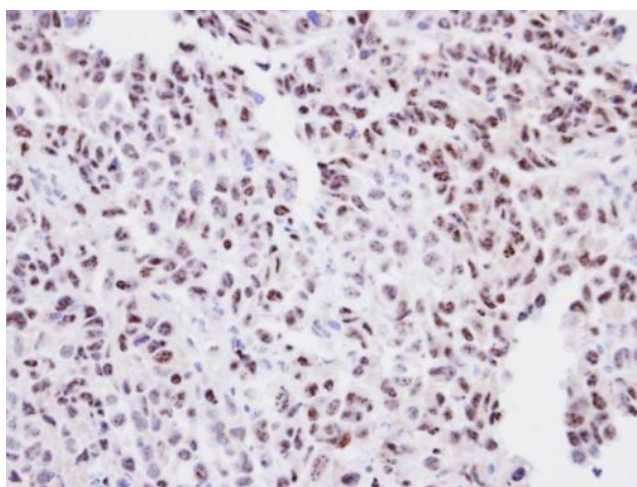
Stem cell - Pluripotency, Transcription Factors

Protein Pathways:

Cell cycle

Product images:

Sample (30 ug of whole cell lysate). A: Raji. 7.5% SDS PAGE. ORC2 antibody, TA308075 diluted at 1:1000.



Immunohistochemical analysis of paraffin-embedded CL1-0 Xenograft, using ORC2 (TA308075) antibody at 1:100 dilution.