

Product datasheet for **TA307928**

ENTPD5 Rabbit Polyclonal Antibody

Product data:

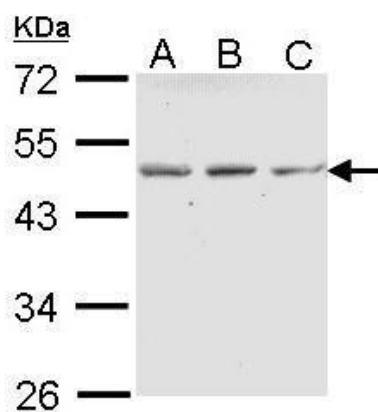
Product Type:	Primary Antibodies
Applications:	IHC, WB
Recommended Dilution:	IHC:1:100-1:1000; WB:1:500-1:3000
Reactivity:	Human (Predicted: Mouse, Rat)
Host:	Rabbit
Isotype:	IgG
Clonality:	Polyclonal
Immunogen:	Recombinant fragment corresponding to a region within amino acids 1 and 191 of ENTPD5 (Uniprot ID#O75356)
Formulation:	0.1M Tris, 0.1M Glycine, 10% Glycerol (pH7). 0.01% Thimerosal was added as a preservative.
Concentration:	lot specific
Purification:	Purified by antigen-affinity chromatography.
Conjugation:	Unconjugated
Storage:	Store at -20°C as received.
Stability:	Stable for 12 months from date of receipt.
Predicted Protein Size:	48 kDa
Gene Name:	ectonucleoside triphosphate diphosphohydrolase 5
Database Link:	NP_001240 Entrez Gene 12499 Mouse Entrez Gene 314312 Rat Entrez Gene 957 Human O75356
Background:	The protein encoded by this gene is similar to E-type nucleotidases (NTPases)/ecto-ATPase/apyrases. NTPases, such as CD39, mediate catabolism of extracellular nucleotides. ENTPD5 contains 4 apyrase-conserved regions which is characteristic of NTPases. [provided by RefSeq]
Synonyms:	CD39L4; NTPDase-5; PCPH
Note:	Seq homology of immunogen across species: mouse (88%), Rat (86%)
Protein Families:	Transmembrane



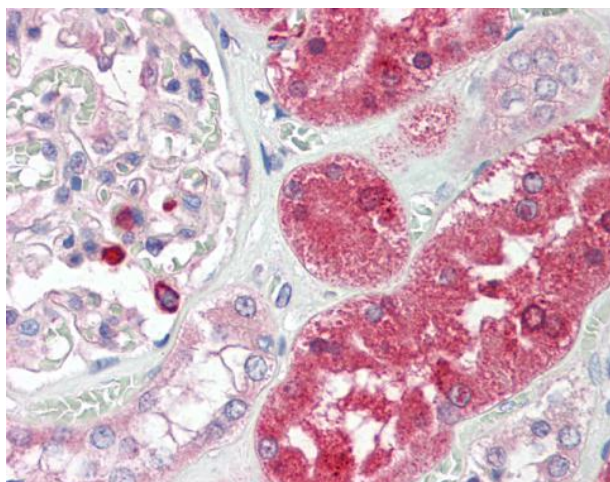
[View online »](#)

Protein Pathways: Purine metabolism, Pyrimidine metabolism

Product images:



Sample (30 ug of whole cell lysate). A: A431. B: H1299. C: Hela. 10% SDS PAGE. TA307928 diluted at 1:1000.



ENTPD5 antibody [N1N3] detects ENTPD5 (CD39L4) protein at cytoplasm on placenta by immunohistochemical analysis. Sample: Paraffin-embedded placenta. ENTPD5 antibody [N1N3] (TA307928) dilution: 1:100.