

Product datasheet for **TA307927**

MAN1B1 Rabbit Polyclonal Antibody

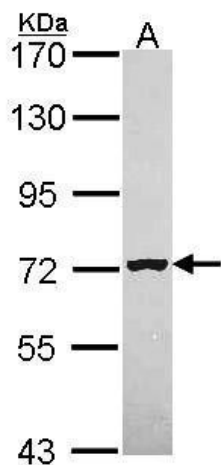
Product data:

Product Type:	Primary Antibodies
Applications:	IHC, WB
Recommended Dilution:	IHC:1:100-1:1000; WB:1:500-1:3000
Reactivity:	Human (Predicted: Mouse)
Host:	Rabbit
Isotype:	IgG
Clonality:	Polyclonal
Immunogen:	Recombinant fragment corresponding to a region within amino acids 414 and 699 of MAN1B1 (Uniprot ID#Q9UKM7)
Formulation:	0.1M Tris, 0.1M Glycine, 10% Glycerol (pH7). 0.01% Thimerosal was added as a preservative.
Concentration:	lot specific
Purification:	Purified by antigen-affinity chromatography.
Conjugation:	Unconjugated
Storage:	Store at -20°C as received.
Stability:	Stable for 12 months from date of receipt.
Predicted Protein Size:	80 kDa
Gene Name:	mannosidase alpha class 1B member 1
Database Link:	NP_057303 Entrez Gene 227619 Mouse Entrez Gene 11253 Human Q9UKM7
Synonyms:	ERMAN1; ERManI; MANA-ER; MRT15
Note:	Seq homology of immunogen across species: Mouse (85%)
Protein Families:	Transmembrane
Protein Pathways:	Metabolic pathways, N-Glycan biosynthesis

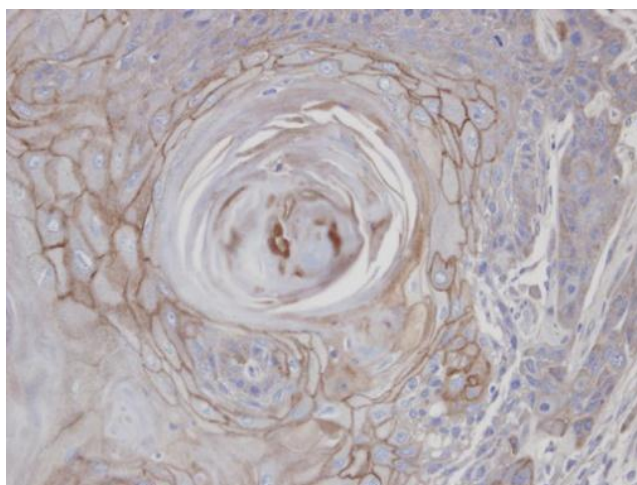


[View online »](#)

Product images:



Sample (30 ug of whole cell lysate). A: HeLa. 7.5% SDS PAGE. MAN1B1 antibody, TA307927 diluted at 1:1000.



Immunohistochemical analysis of paraffin-embedded SCC25 xenograft, using MAN1B1 (TA307927) antibody at 1:100 dilution.