

Product datasheet for **TA307921**

alpha Tubulin (TUBA1A) Rabbit Polyclonal Antibody

Product data:

| | |
|-------------------------|---|
| Product Type: | Primary Antibodies |
| Applications: | IF, IHC, WB |
| Recommended Dilution: | ICC/IF:1:100-1:1000; IHC:1:100-1:1000; WB:1:500-1:3000 |
| Reactivity: | Human, Mouse (Predicted: Rat, Chimpanzee, Bovine, Rhesus Monkey) |
| Host: | Rabbit |
| Isotype: | IgG |
| Clonality: | Polyclonal |
| Immunogen: | Recombinant fragment contain a sequence corresponding to a region within amino acids 227 and 440 of alpha Tubulin 1A (Uniprot ID#Q71U36) |
| Formulation: | 0.1M Tris, 0.1M Glycine, 20% Glycerol (pH7). 0.01% Thimerosal was added as a preservative. |
| Concentration: | lot specific |
| Purification: | Purified by antigen-affinity chromatography. |
| Conjugation: | Unconjugated |
| Storage: | Store at -20°C as received. |
| Stability: | Stable for 12 months from date of receipt. |
| Predicted Protein Size: | 50 kDa |
| Gene Name: | tubulin alpha 1a |
| Database Link: | NP_006000 Entrez Gene 22142 Mouse Entrez Gene 64158 Rat Entrez Gene 7846 Human Q71U36 |



[View online »](#)

Background: Microtubules of the eukaryotic cytoskeleton perform essential and diverse functions and are composed of a heterodimer of alpha and beta tubulins. The genes encoding these microtubule constituents belong to the tubulin superfamily, which is composed of six distinct families. Genes from the alpha, beta and gamma tubulin families are found in all eukaryotes. The alpha and beta tubulins represent the major components of microtubules, while gamma tubulin plays a critical role in the nucleation of microtubule assembly. There are multiple alpha and beta tubulin genes, which are highly conserved among species. This gene encodes alpha tubulin and is highly similar to mouse and rat Tuba1 gene. Northern blotting studies have shown that the gene expression is predominantly found in morphologically differentiated neurologic cells. This gene is one of three alpha-tubulin genes in a cluster on chromosome 12q. [provided by RefSeq]

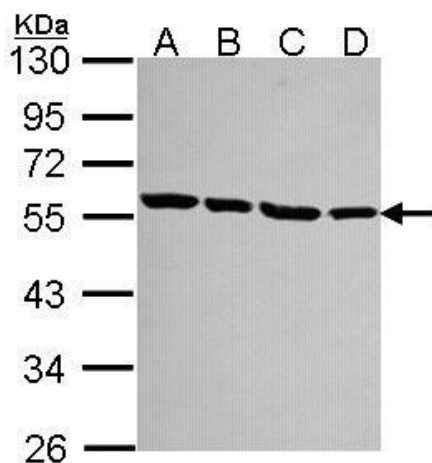
Synonyms: B-ALPHA-1; LIS3; TUBA3

Note: Seq homology of immunogen across species: Rat (100%), Rhesus Monkey (100%), Chimpanzee (100%), Bovine (100%)

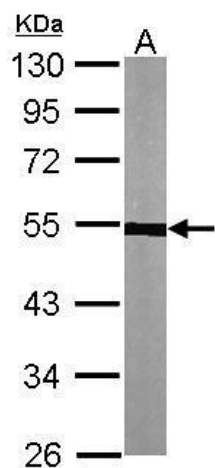
Protein Families: Druggable Genome

Protein Pathways: Gap junction, Pathogenic Escherichia coli infection

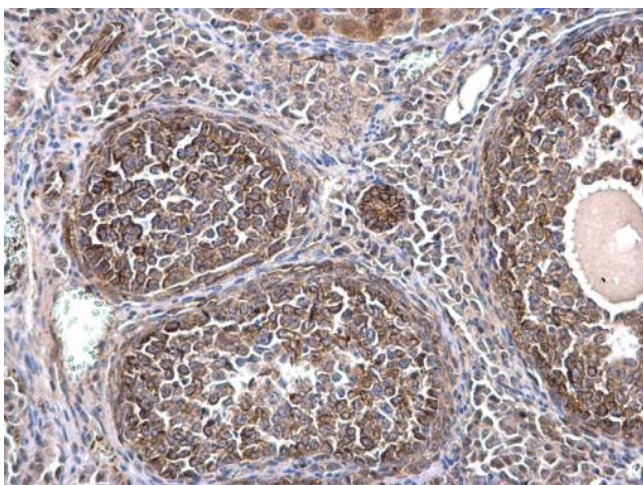
Product images:



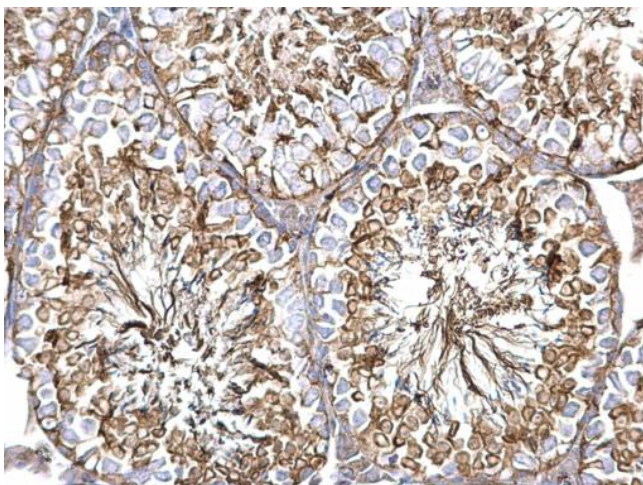
Sample (30 ug of whole cell lysate). A: 293T. B: A431. C: JurKat. D: Raji. 10% SDS PAGE. TA307921 diluted at 1:1000.



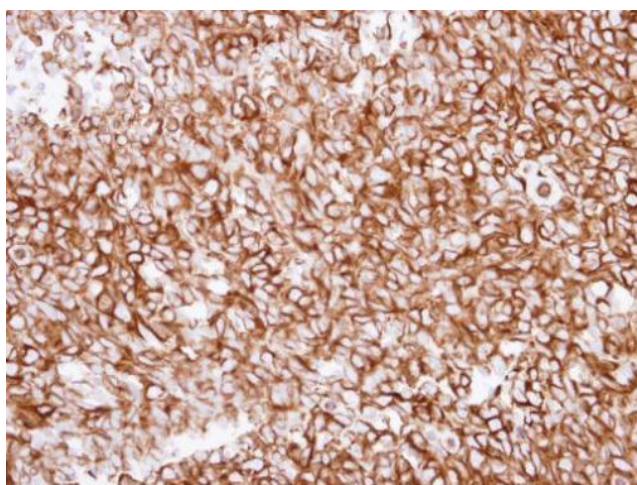
Sample (30 ug of whole cell lysate). A: NIH-3T3. 10% SDS PAGE. TA307921 diluted at 1:1000.



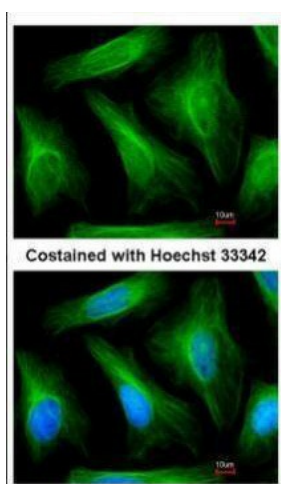
alpha Tubulin 1A antibody detects alpha Tubulin 1A protein at cytosol on mouse ovary by immunohistochemical analysis. Sample: Paraffin-embedded mouse ovary. alpha Tubulin 1A antibody (TA307921) dilution: 1:500.



alpha Tubulin 1A antibody detects alpha Tubulin 1A protein at cytosol on mouse testis by immunohistochemical analysis. Sample: Paraffin-embedded mouse testis. alpha Tubulin 1A antibody (TA307921) dilution: 1:500.



Immunohistochemical analysis of paraffin-embedded Breast ca, using alpha Tubulin 1A (TA307921) antibody at 1:250 dilution.



Immunofluorescence analysis of paraformaldehyde-fixed HeLa, using alpha Tubulin 1A (TA307921) antibody at 1:200 dilution.