

## Product datasheet for **TA307901**

### NSFL1C Rabbit Polyclonal Antibody

#### Product data:

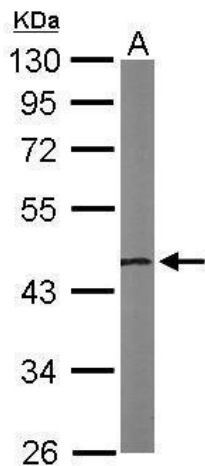
Product Type:	Primary Antibodies
Applications:	IHC, WB
Recommended Dilution:	IHC:1:100-1:1000; WB:1:500-1:3000
Reactivity:	Human, Mouse (Predicted: Rhesus Monkey)
Host:	Rabbit
Isotype:	IgG
Clonality:	Polyclonal
Immunogen:	Recombinant fragment corresponding to a region within amino acids 21 and 302 of NSFL1C (Uniprot ID#Q9UNZ2)
Formulation:	0.1M Tris, 0.1M Glycine, 10% Glycerol (pH7). 0.01% Thimerosal was added as a preservative.
Concentration:	lot specific
Purification:	Purified by antigen-affinity chromatography.
Conjugation:	Unconjugated
Storage:	Store at -20°C as received.
Stability:	Stable for 12 months from date of receipt.
Predicted Protein Size:	41 kDa
Gene Name:	NSFL1 cofactor
Database Link:	<a href="#">NP_872289</a> <a href="#">Entrez Gene 386649 Mouse</a> <a href="#">Entrez Gene 55968 Human</a> <a href="#">Q9UNZ2</a>
Background:	N-ethylmaleimide-sensitive factor (NSF) and valosin-containing protein (p97) are two ATPases known to be involved in transport vesicle/target membrane fusion and fusions between membrane compartments. A trimer of the protein encoded by this gene binds a hexamer of cytosolic p97 and is required for p97-mediated regrowth of Golgi cisternae from mitotic Golgi fragments. Multiple transcript variants encoding several different isoforms have been found for this gene. [provided by RefSeq]
Synonyms:	dj776F14.1; MGC3347; p47; UBX1; UBXD10; UBXN2C



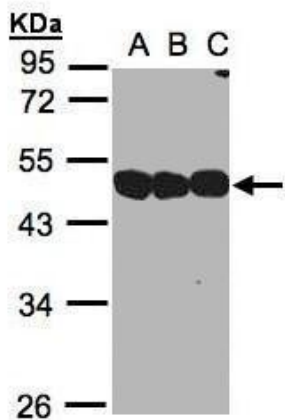
[View online »](#)

**Note:** Seq homology of immunogen across species: Rhesus Monkey (100%)

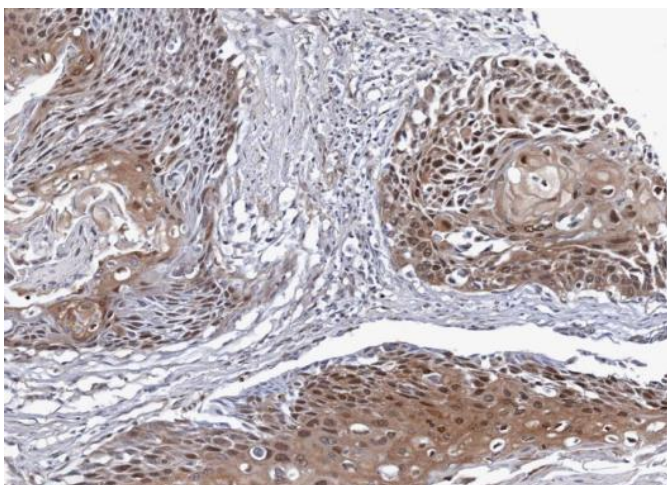
**Product images:**



Sample (50 ug of whole cell lysate). A: Mouse brain. 10% SDS PAGE. TA307901 diluted at 1:1000.



Sample (30 ug whole cell lysate). A:293T. B:A431. C:H1299. 10% SDS PAGE. TA307901 diluted at 1:1000



Immunohistochemical analysis of paraffin-embedded differential N/T pair Lung SCC cancer xenograft, using NSFL1C (TA307901) antibody at 1:100 dilution.