

Product datasheet for **TA306696**

PIGY Rabbit Polyclonal Antibody

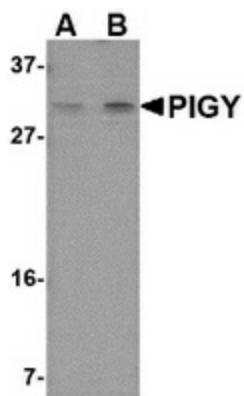
Product data:

Product Type:	Primary Antibodies
Applications:	IF, IHC, WB
Recommended Dilution:	WB: 1 - 2 ug/mL, ICC: 2.5 ug/mL, IF: 20 ug/mL
Reactivity:	Human, Mouse
Host:	Rabbit
Isotype:	IgG
Clonality:	Polyclonal
Immunogen:	PIG-Y antibody was raised against a 16 amino acid peptide near the center of human PIG-Y.
Formulation:	PBS containing 0.02% sodium azide.
Concentration:	1ug/ul
Purification:	Affinity chromatography purified via peptide column
Conjugation:	Unconjugated
Storage:	Store at -20°C as received.
Stability:	Stable for 12 months from date of receipt.
Gene Name:	phosphatidylinositol glycan anchor biosynthesis class Y
Database Link:	NP_116295 Entrez Gene 84992 Human Q3MUY2
Background:	Glycosylphosphatidylinositol (GPI) lipid anchoring is an important post-translational modification of proteins that takes place in the endoplasmic reticulum. The synthesis of GPI is initiated by GPI-N-acetylglucosaminyltransferase (GPI-GnT), a complex of proteins including PIG-A, PIG-H, PIG-C, GPI1, and DPM2. PIG-Y, the mammalian homolog to yeast Eri1p, is also thought to be involved in the biosynthesis of GPI. The PIG-Y gene encodes two proteins, one of which arises from leaky scanning of the mRNA. This antibody only detects isoform 1 of PIG-Y. Despite its predicted molecular weight, PIG-Y often migrates at 28-30 kDa in SDS-PAGE.
Synonyms:	HPMRS6; PIG-Y

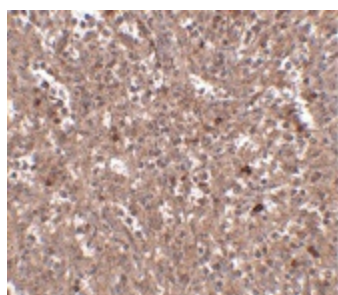


[View online »](#)

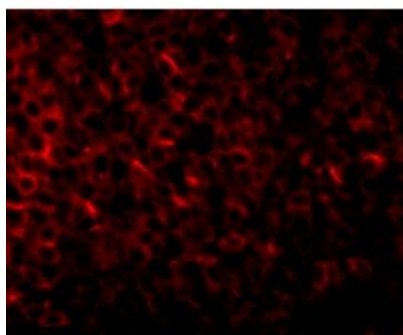
Product images:



Western blot analysis of PIG-Y in human spleen tissue lysate with PIG-Y antibody at (A) 1 and (B) 2 ug/ml.



Immunohistochemistry of PIG-Y in human spleen tissue with PIG-Y antibody at 2.5 ug/ml.



Immunofluorescence of PIG-Y in human spleen tissue with PIGY1 antibody at 20 ug/mL.