

Product datasheet for **TA306465**

STEAP3 Rabbit Polyclonal Antibody

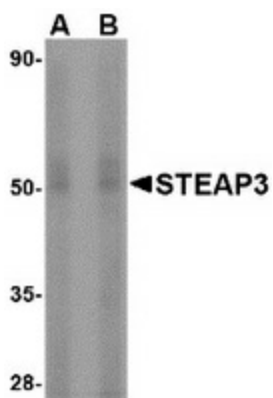
Product data:

Product Type:	Primary Antibodies
Applications:	IF, IHC, WB
Recommended Dilution:	WB: 1 - 2 ug/mL, ICC: 2.5 ug/mL, IF: 20 ug/mL
Reactivity:	Human, Mouse, Rat
Host:	Rabbit
Isotype:	IgG
Clonality:	Polyclonal
Immunogen:	STEAP3 antibody was raised against a 15 amino acid peptide from near the amino terminus of human STEAP3.
Formulation:	PBS containing 0.02% sodium azide.
Concentration:	1ug/ul
Purification:	Affinity chromatography purified via peptide column
Conjugation:	Unconjugated
Storage:	Store at -20°C as received.
Stability:	Stable for 12 months from date of receipt.
Gene Name:	STEAP3 metalloreductase
Database Link:	AAH95421 Entrez Gene 55240 Human Q658P3
Background:	The six-transmembrane epithelial antigen of prostate 3 (STEAP3) is a member of a family of metalloreductases identified as cell-surface antigens in prostate tissue. Similar to two other members of the STEAP family (STEAP 2 and STEAP4), STEAP3 promotes both iron and copper reduction. STEAP3 is highly expressed in hematopoietic tissues and colocalizes with the transferrin endosome. Overexpression of STEAP3 stimulates iron reduction; mice lacking STEAP3 are deficient in erythroid ferrireductase activity, suggesting that STEAP3 is an endosomal ferrireductase required for transferrin-dependent iron uptake in erythroid cells. This STEAP3 antibody does not cross-react with other STEAP proteins.
Synonyms:	AHMIO2; dudlin-2; dudulin-2; pHyde; STMP3; TSAP6

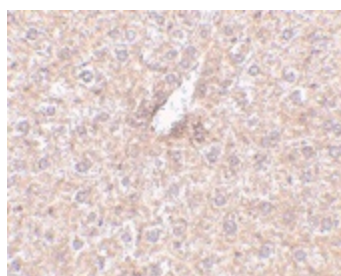


[View online »](#)

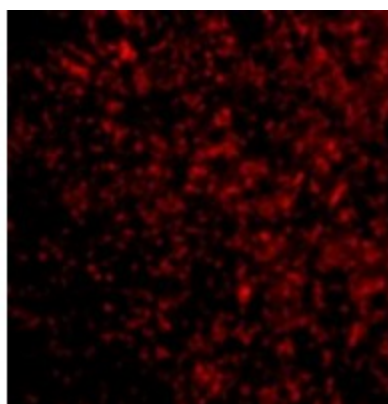
Product images:



Western blot analysis of STEAP3 in rat liver tissue lysate with STEAP3 antibody at (A) 1 and (B) 2 ug/ml.



Immunohistochemistry of STEAP3 in mouse liver tissue with STEAP3 antibody at 2.5 ug/ml.



Immunofluorescence of STEAP3 in Mouse Liver cells with STEAP3 antibody at 20 ug/mL.