

Product datasheet for **TA306308**

beta Actin (ACTB) Rabbit Polyclonal Antibody

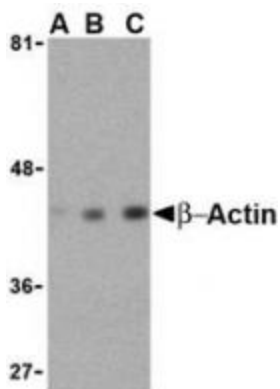
Product data:

Product Type:	Primary Antibodies
Applications:	IF, WB
Recommended Dilution:	WB: 0.5 - 2 ug/mL, ICC: 10 ug/mL, IF: 20 ug/mL
Reactivity:	Human, Mouse, Rat
Host:	Rabbit
Isotype:	IgG
Clonality:	Polyclonal
Immunogen:	b-actin antibody was raised against a 16 amino acid peptide from near the carboxy-terminus of human b-actin.
Formulation:	PBS containing 0.02% sodium azide.
Purification:	Affinity chromatography purified via peptide column
Conjugation:	Unconjugated
Storage:	Store at -20°C as received.
Stability:	Stable for 12 months from date of receipt.
Gene Name:	actin, beta
Database Link:	AAH02409 Entrez Gene 60 Human P60709
Background:	Actins are highly conserved proteins that are involved in cell motility, structure and integrity, processes that are crucial for tissue development and the development of organism (reviewed in 1). The actin cytoskeleton is one of the principal drivers of cell motility and is capable of responding to complex signaling cascades. Recent evidence suggests that it may play key roles in regulating apoptosis and aging (2). beta actin is one of six different actin isoforms which have been identified. Like GAPDH, B-actin is constitutively expressed at high levels in almost all tissues and cell lines making it ideal for use as a loading control marker in immunoblots.
Synonyms:	BRWS1; PS1TP5BP1



[View online »](#)

Product images:



Western blot analysis of beta-actin in HeLa cell lysate with beta-actin antibody at (A) 0.5, (B) 1 and (C) 2 ug/mL.

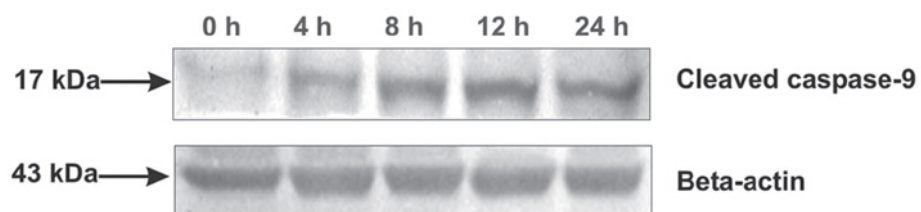
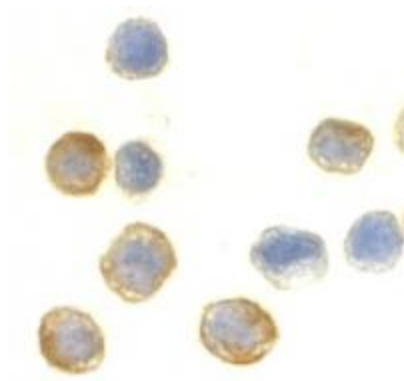
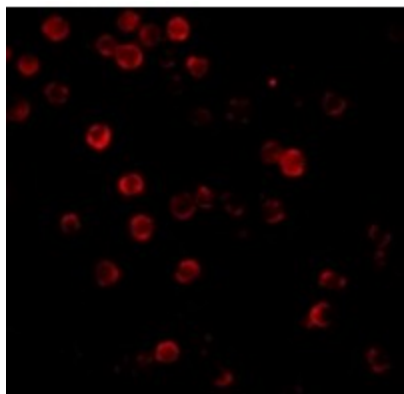


Figure from citation: Western Blot of ACTB (Beta-actin) protein level by using anti-ACTB antibody in human MCF-7 cells. [View Citation](#)



Immunocytochemistry of beta-actin in HeLa cells with beta-actin antibody at 10ug/mL.



Immunofluorescence of Beta-actin in HeLa cells with Beta-actin antibody at 20 ug/mL.