

Product datasheet for **TA306207**

MCL1 Rabbit Polyclonal Antibody

Product data:

Product Type:	Primary Antibodies
Applications:	IF, WB
Recommended Dilution:	WB: 1 - 2 ug/mL, ICC: 2 ug/mL, IF: 10 ug/mL
Reactivity:	Human, Mouse, Rat
Host:	Rabbit
Isotype:	IgG
Clonality:	Polyclonal
Immunogen:	Mcl-1 antibody was raised against a peptide corresponding to 16 amino acids near the carboxy-terminus of human Mcl-1.
Formulation:	PBS containing 0.02% sodium azide.
Concentration:	1ug/ul
Purification:	Ion exchange chromatography purified
Conjugation:	Unconjugated
Storage:	Store at -20°C as received.
Stability:	Stable for 12 months from date of receipt.
Gene Name:	myeloid cell leukemia 1
Database Link:	NP_068779 Entrez Gene 17210 Mouse Entrez Gene 60430 Rat Entrez Gene 4170 Human Q07820

Background: Myeloid cell leukemia-1 (Mcl-1) is a member of the Bcl-2 family of proteins that can act to promote cell survival (reviewed in 1). While the mechanism by which Mcl-1 inhibits apoptosis is not known, it is thought that it may heterodimerize and neutralize pro-apoptotic members of the Bcl-2 family such as Bim or Bak (2,3). Mcl-1 was originally identified in differentiating myeloid cells (4), but has since been shown to be expressed in multiple cell types. Mcl-1 is essential for embryogenesis (5) and for the development and maintenance of B and T lymphocytes in animals (3). Mcl-1 exists as at least two distinct isoforms designated Mcl-1L and Mcl-1S. In marked contrast to the larger isoform of Mcl-1, overexpression of Mcl-1S promotes cell death (6).

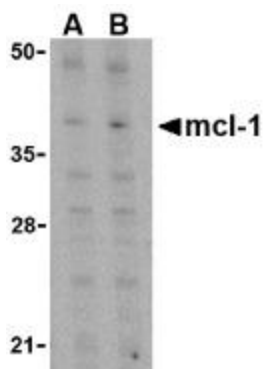


[View online »](#)

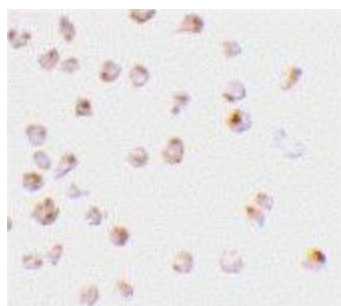
Synonyms: bcl2-L-3; BCL2L3; EAT; Mcl-1; mcl1; MCL1-ES; MCL1L; MCL1S; TM

Protein Families: Druggable Genome, Transmembrane

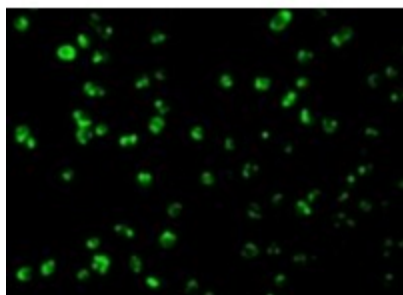
Product images:



Western blot analysis of Mcl-1 in Raji cell lysates with Mcl-1 antibody at (A) 1 and (B) 2 ug/mL.



Immunocytochemistry staining of Raji cells using Mcl-1 antibody at 2 ug/mL.



Immunofluorescence of Mcl-1 in Raji cells with Mcl-1 antibody at 10 ug/mL.