

Product datasheet for **TA306189**

IRF3 Rabbit Polyclonal Antibody

Product data:

Product Type:	Primary Antibodies
Applications:	IF, IHC, WB
Recommended Dilution:	WB: 1 - 4 ug/mL, ICC: 2 ug/mL, IF: 20 ug/mL
Reactivity:	Human, Mouse
Host:	Rabbit
Isotype:	IgG
Clonality:	Polyclonal
Immunogen:	IRF3 antibody was raised against a peptide corresponding to 14 amino acids near the carboxy-terminus of human IRF3.
Formulation:	PBS containing 0.02% sodium azide.
Concentration:	1ug/ul
Purification:	Affinity chromatography purified via peptide column
Conjugation:	Unconjugated
Storage:	Store at -20°C as received.
Stability:	Stable for 12 months from date of receipt.
Gene Name:	interferon regulatory factor 3
Database Link:	NP_001562 Entrez Gene 54131 Mouse Entrez Gene 3661 Human Q14653
Background:	Interferons (IFN)s are involved in a multitude of immune interactions during viral infections and play a major role in both the induction and regulation of innate and adaptive antiviral mechanisms (1 for review). During infection, host-virus interactions signal downstream molecules such as transcription factors such as IFN regulatory factor-3 (IRF3) which can act to stimulate transcription of IFN-alpha/beta genes. IRF3 is present in an inactive form in the cytoplasm of most cells (2). Following viral infection, IRF3 can be activated by IkappaB kinase-epsilon and TANK-binding kinase 1 (TBK1) (3,4), whereupon IRF3 translocates to the nucleus. IRF3 can also be activated by stimulation of toll-like receptor 3 (TLR3) by dsRNA (3,5). IRF3 exists as at least two distinct isoforms.



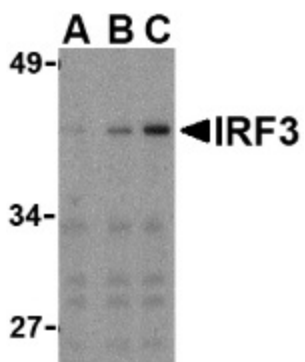
[View online »](#)

Synonyms: interferon regulatory factor 3; MGC94729

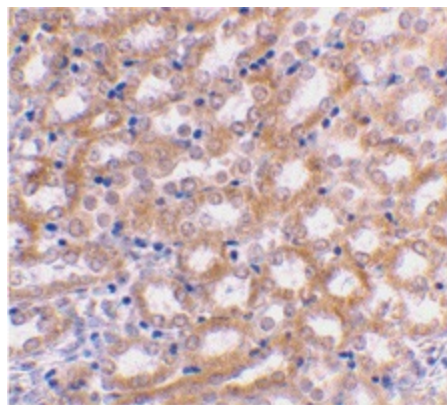
Protein Families: Druggable Genome, Transcription Factors

Protein Pathways: Cytosolic DNA-sensing pathway, RIG-I-like receptor signaling pathway, Toll-like receptor signaling pathway

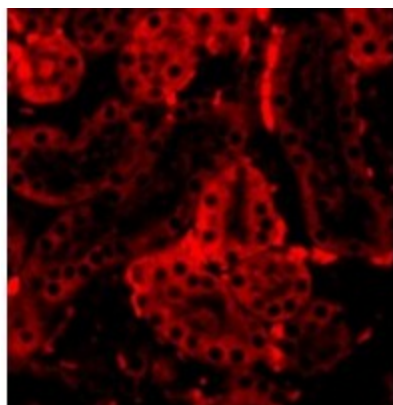
Product images:



Western blot analysis of IRF3 in Ramos whole cell lysate with IRF3 antibody at (A) 1, (B) 2, and (C) 4 ug/ml.



Immunohistochemical staining of mouse kidney using IRF3 antibody at 2 ug/ml.



Immunofluorescence of IRF3 in Mouse Kidney cells with IRF3 antibody at 20 ug/mL.