

## Product datasheet for **TA306124**

### TRAF6 Rabbit Polyclonal Antibody

#### Product data:

Product Type:	Primary Antibodies
Applications:	IF, WB
Recommended Dilution:	WB: 1 ug/mL, ICC: 10 ug/mL, IF: 20 ug/mL
Reactivity:	Human, Mouse, Rat
Host:	Rabbit
Isotype:	IgG
Clonality:	Polyclonal
Immunogen:	TRAF6 antibody was raised against a peptide corresponding to 14 amino acids near the C-terminus of human TRAF6.
Formulation:	PBS containing 0.02% sodium azide.
Concentration:	1ug/ul
Purification:	Ion exchange chromatography purified
Conjugation:	Unconjugated
Storage:	Store at -20°C as received.
Stability:	Stable for 12 months from date of receipt.
Gene Name:	TNF receptor associated factor 6
Database Link:	<a href="#">NP_004611</a> <a href="#">Entrez Gene 22034 Mouse</a> <a href="#">Entrez Gene 311245 Rat</a> <a href="#">Entrez Gene 7189 Human</a> <a href="#">Q9Y4K3</a>



[View online »](#)

**Background:**

Signals from the IL-1 receptor (IL-1R)/Toll-like receptor (TLR) and TNF receptor (TNFR) superfamilies are critical for regulating the function of antigen-presenting cells. Signals transduced by these molecules lead to increased expression and activation of transcription factors such as NF- $\kappa$ B (1,2). TNF receptor-associated factor 6 (TRAF6) is unique in that it is a signaling adapter molecule common to both families (3). TRAF6 is important in cytokine production, dendritic cell (DC) maturation, and the T cell stimulatory capacity of DCs in response to TLR and CD40 ligands (4). It can be activated in the IL-1R/TLR signaling pathway by IL-1 receptor-associated kinase 1 (IRAK-1) (5) or by other TLR adaptor molecules such as TRIF (6). Also, it has been shown that TRAF6 can interact directly with TNFR family members CD40 and RANK (7).

**Synonyms:**

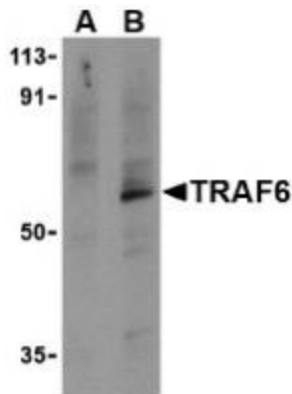
MGC:3310; RNF85

**Protein Families:**

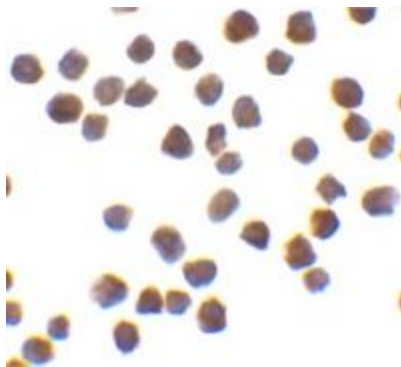
Druggable Genome

**Protein Pathways:**

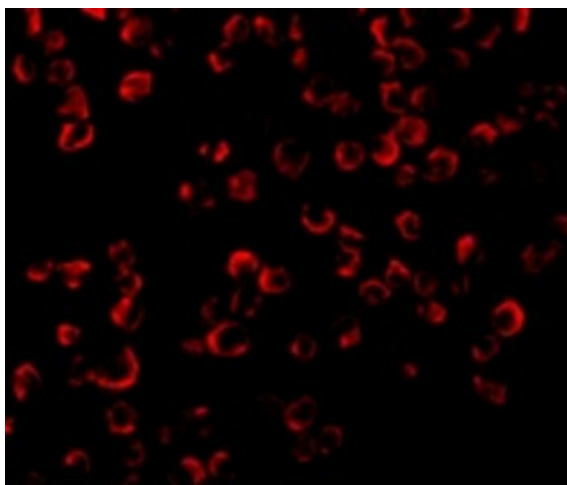
Endocytosis, MAPK signaling pathway, Neurotrophin signaling pathway, NOD-like receptor signaling pathway, Pathways in cancer, RIG-I-like receptor signaling pathway, Small cell lung cancer, Toll-like receptor signaling pathway, Ubiquitin mediated proteolysis

**Product images:**

Western blot analysis of TRAF6 in PC-3 cell lysates with TRAF6 antibody at 1 ug/mL in the presence (A) or absence (B) of 1 ug blocking peptide.



Immunocytochemistry of TRAF6 in K562 cells with TRAF6 antibody at 0.5 ug/mL.



Immunofluorescence of TRAF6 in K562 cells with TRAF6 antibody at 20 ug/mL.