

Product datasheet for **TA305951**

ADAM17 Rabbit Polyclonal Antibody

Product data:

Product Type:	Primary Antibodies
Applications:	IF, WB
Recommended Dilution:	WB: 0.5 ug/mL, ICC: 10 ug/mL, IF: 10 ug/mL
Reactivity:	Human, Mouse, Rat
Host:	Rabbit
Isotype:	IgG
Clonality:	Polyclonal
Immunogen:	TACE antibody was raised against a peptide corresponding to amino acids near the carboxy terminus of human TACE This sequence differs from those of mouse and rat TACE by one amino acid.
Formulation:	PBS containing 0.02% sodium azide.
Concentration:	1 mg/ml
Purification:	Affinity chromatography purified via peptide column
Conjugation:	Unconjugated
Storage:	Store at -20°C as received.
Stability:	Stable for 12 months from date of receipt.
Gene Name:	ADAM metallopeptidase domain 17
Database Link:	NP_003174 Entrez Gene 11491 Mouse Entrez Gene 57027 Rat Entrez Gene 6868 Human P78536



[View online »](#)

Background:

Tumor-necrosis factor- α is a proinflammatory cytokine and contributes to a variety of inflammatory disease responses and programmed cell death. TNF- α is synthesized as a 26K type II membrane-bound precursor that is cleaved by a convertase to generate secreted 17K mature TNF- α . TNF- α converting enzyme (TACE) protein was recently purified and the human and mouse TACE cDNAs were cloned by several groups separately. TACE is a membrane-bound metalloprotease-disintegrin in the family of mammalian ADAM (for a disintegrin and metalloprotease). TACE also processes other cell surface proteins, including TNF receptor, TGF α , the L-selectin adhesion molecule, and alpha-cleavage of amyloid protein precursor (APP) (4,5). TACE mRNA is expressed in a variety of human and murine tissues. TACE was selected as one of the few targets in cytokine activation by the Eighth International Conference of the Inflammation Research Association.

Synonyms:

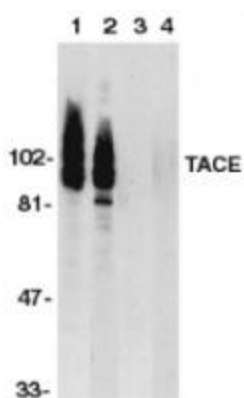
ADAM18; CD156B; CSVP; NISBD; NISBD1; TACE

Protein Families:

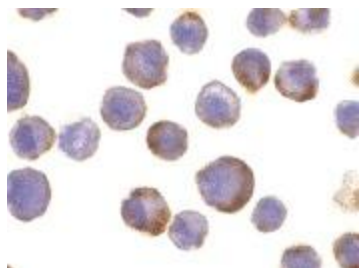
Druggable Genome, Protease, Transmembrane

Protein Pathways:

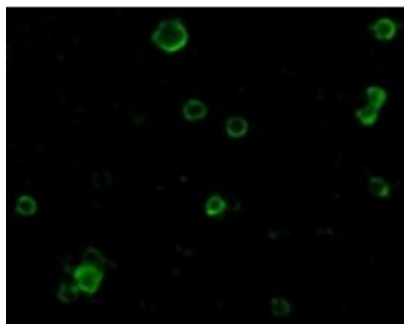
Alzheimer's disease, Epithelial cell signaling in Helicobacter pylori infection, Notch signaling pathway

Product images:

Western blot analysis of TACE in HeLa and Jurkat whole cell lysate in the absence or presence of blocking peptide (Cat. No. 1131P) with TACE antibody at 1:500 dilution.



Immunocytochemistry of TACE in HeLa cells with TACE antibody at 10 ug/mL.



Immunofluorescence of TACE in HeLa cells with TACE antibody at 10 ug/mL.