

Product datasheet for **TA305752**

C1D Goat Polyclonal Antibody

Product data:

Product Type:	Primary Antibodies
Applications:	WB
Recommended Dilution:	WB: 0.1-0.3ug/ml.
Reactivity:	Human
Host:	Goat
Isotype:	IgG
Clonality:	Polyclonal
Immunogen:	Peptide with sequence C-SKNASKVANKGKSKS, from the C Terminus of the protein sequence according to NP_775269.1.
Formulation:	0.5 mg/ml in Tris saline, 0.02% sodium azide, pH7.3 with 0.5% bovine serum albumin
Concentration:	lot specific
Purification:	Purified from goat serum by ammonium sulphate precipitation followed by antigen affinity chromatography using the immunizing peptide. Supplied at 0.5 mg/ml in Tris saline, 0.02% sodium azide, pH7.3 with 0.5% bovine serum albumin. Aliquot and store at -20C. Minimize freezing and thawing.
Conjugation:	Unconjugated
Storage:	Store at -20°C as received.
Stability:	Stable for 12 months from date of receipt.
Gene Name:	C1D nuclear receptor corepressor
Database Link:	NP_006324 Entrez Gene 10438 Human Q13901
Background:	The protein encoded by this gene is a DNA binding and apoptosis-inducing protein and is localized in the nucleus. It is also a Rac3-interacting protein which acts as a corepressor for the thyroid hormone receptor. This protein is thought to regulate TRAX/Translin complex formation. Several alternatively spliced transcript variants of this gene have been described, but the full length nature of some of these variants has not been determined. [provided by RefSeq]



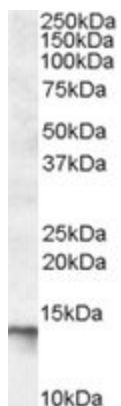
[View online »](#)

Synonyms: hC1D; LRP1; Rrp47; SUN-CoR; SUNCOR

Protein Families: Druggable Genome

Protein Pathways: RNA degradation

Product images:



TA305752 (0.1ug/ml) staining of Human Skeletal Muscle lysate (35ug protein in RIPA buffer). Primary incubation was 1 hour. Detected by chemiluminescence.