

Product datasheet for **TA302973**

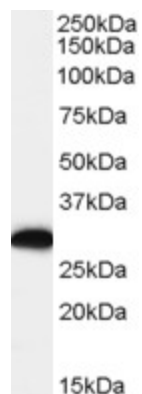
EFHD2 Goat Polyclonal Antibody

Product data:

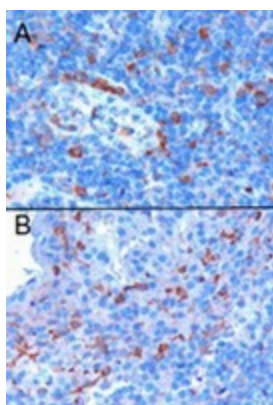
Product Type:	Primary Antibodies
Applications:	IHC, WB
Recommended Dilution:	ELISA: 1:16,000. WB: 0.1-0.3µg/ml.
Reactivity:	Human, Mouse (Expected from sequence similarity: Rat, Dog, Cow)
Host:	Goat
Isotype:	IgG
Clonality:	Polyclonal
Immunogen:	Peptide with sequence CAAFKEIQSTFK, from the C Terminus of the protein sequence according to NP_077305.2.
Formulation:	Supplied at 0.5 mg/ml in Tris saline, 0.02% sodium azide, pH7.3 with 0.5% bovine serum albumin.
Concentration:	lot specific
Purification:	Purified from goat serum by ammonium sulphate precipitation followed by antigen affinity chromatography using the immunizing peptide. Supplied at 0.5 mg/ml in Tris saline, 0.02% sodium azide, pH7.3 with 0.5% bovine serum albumin. Aliquot and store at -20°C. Minimize freezing and thawing.
Conjugation:	Unconjugated
Storage:	Store at -20°C as received.
Stability:	Stable for 12 months from date of receipt.
Gene Name:	EF-hand domain family member D2
Database Link:	NP_077305 Entrez Gene 27984 Mouse Entrez Gene 298609 Rat Entrez Gene 607254 Dog Entrez Gene 79180 Human Q96C19
Background:	EF hand domain containing 2
Synonyms:	SWS1



[View online »](#)

Product images:

TA302973 (0.1ug/ml) staining of human lymph node lysate. Primary incubation was 1 hour. Detected by chemiluminescence.



TA302973 positive cells A) in the interfollicular area and surrounding a vessel, B) in proximity of the epithelial cryptae.