

Product datasheet for **TA302775**

ADAM17 Goat Polyclonal Antibody

Product data:

Product Type:	Primary Antibodies
Applications:	WB
Recommended Dilution:	ELISA: 1:128,000. WB: 0.1-0.3µg/ml.
Reactivity:	Human (Expected from sequence similarity: Mouse, Rat)
Host:	Goat
Isotype:	IgG
Clonality:	Polyclonal
Immunogen:	Peptide with sequence LQRQNRVDSKETEC, from the C Terminus of the protein sequence according to NP_003174.3.
Formulation:	Supplied at 0.5 mg/ml in Tris saline, 0.02% sodium azide, pH7.3 with 0.5% bovine serum albumin.
Concentration:	lot specific
Purification:	Purified from goat serum by ammonium sulphate precipitation followed by antigen affinity chromatography using the immunizing peptide. Supplied at 0.5 mg/ml in Tris saline, 0.02% sodium azide, pH7.3 with 0.5% bovine serum albumin. Aliquot and store at -20°C. Minimize freezing and thawing.
Conjugation:	Unconjugated
Storage:	Store at -20°C as received.
Stability:	Stable for 12 months from date of receipt.
Gene Name:	ADAM metallopeptidase domain 17
Database Link:	NP_003174 Entrez Gene 11491 Mouse Entrez Gene 57027 Rat Entrez Gene 6868 Human P78536



[View online »](#)

Background:

This gene encodes a member of the ADAM (a disintegrin and metalloprotease domain) family. Members of this family are membrane-anchored proteins structurally related to snake venom disintegrins, and have been implicated in a variety of biologic processes involving cell-cell and cell-matrix interactions, including fertilization, muscle development, and neurogenesis. The protein encoded by this gene functions as a tumor necrosis factor-alpha converting enzyme; binds mitotic arrest deficient 2 protein; and also plays a prominent role in the activation of the Notch signaling pathway. [provided by RefSeq]

Synonyms:

ADAM18; CD156B; CSVP; NISBD; NISBD1; TACE

Protein Families:

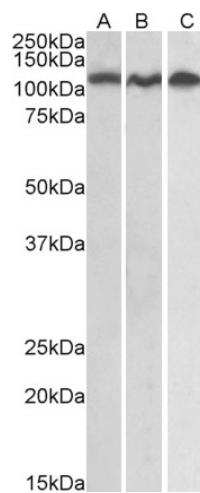
Druggable Genome, Protease, Transmembrane

Protein Pathways:

Alzheimer's disease, Epithelial cell signaling in Helicobacter pylori infection, Notch signaling pathway

Product images:


TA302775 staining (0.2ug/ml) of HeLa lysate (RIPA buffer, 35ug total protein per lane). Primary incubated for 1 hour. Detected by western blot using chemiluminescence.



TA302775 staining (0.3ug/ml) of Daudi (A), Jurkat (B) and HeLa (C) lysates (35ug total protein in RIPA buffer). Primary incubated for 1 hour. Detected by chemiluminescence.